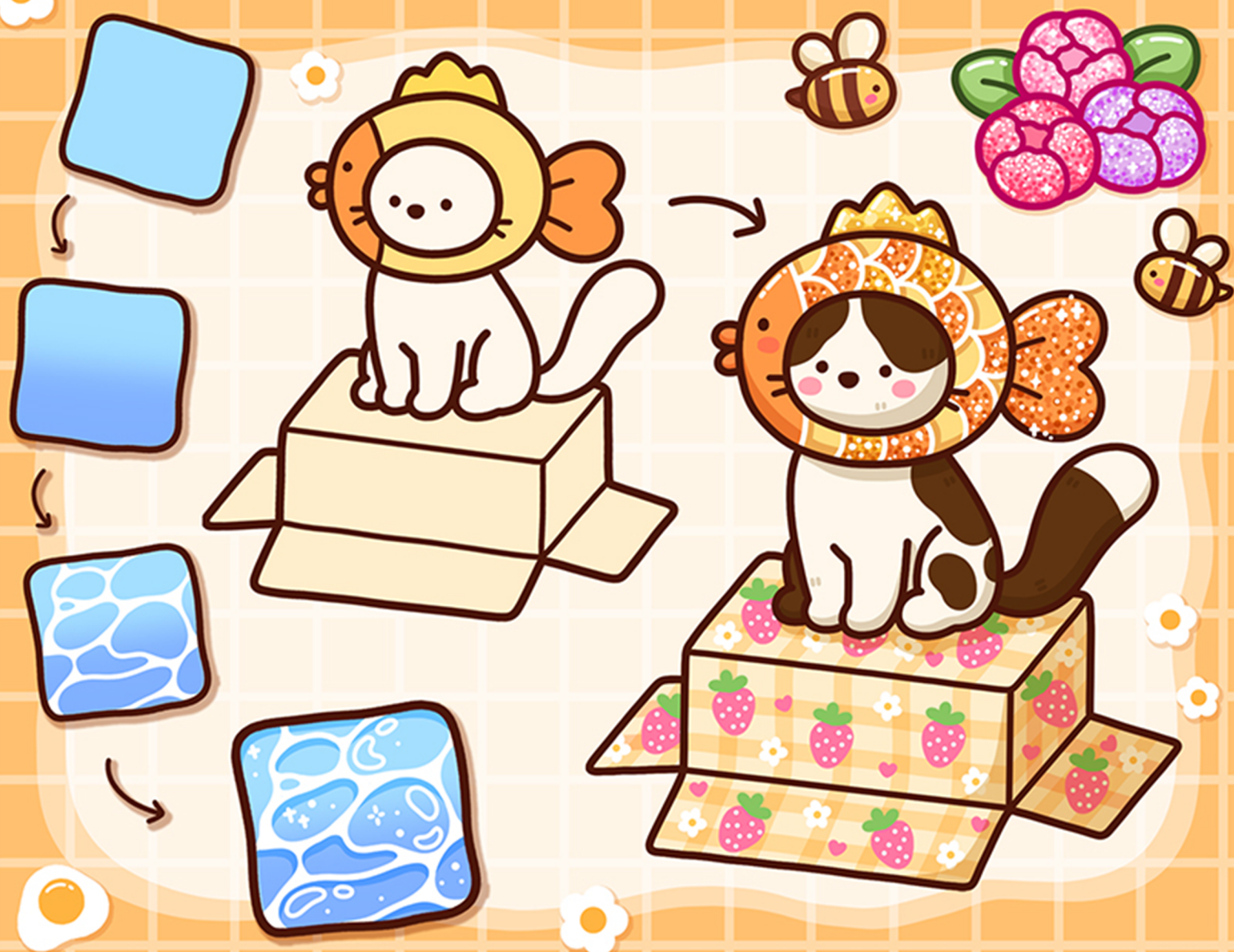


Southern Lotus

# How to Draw EASY PATTERNS



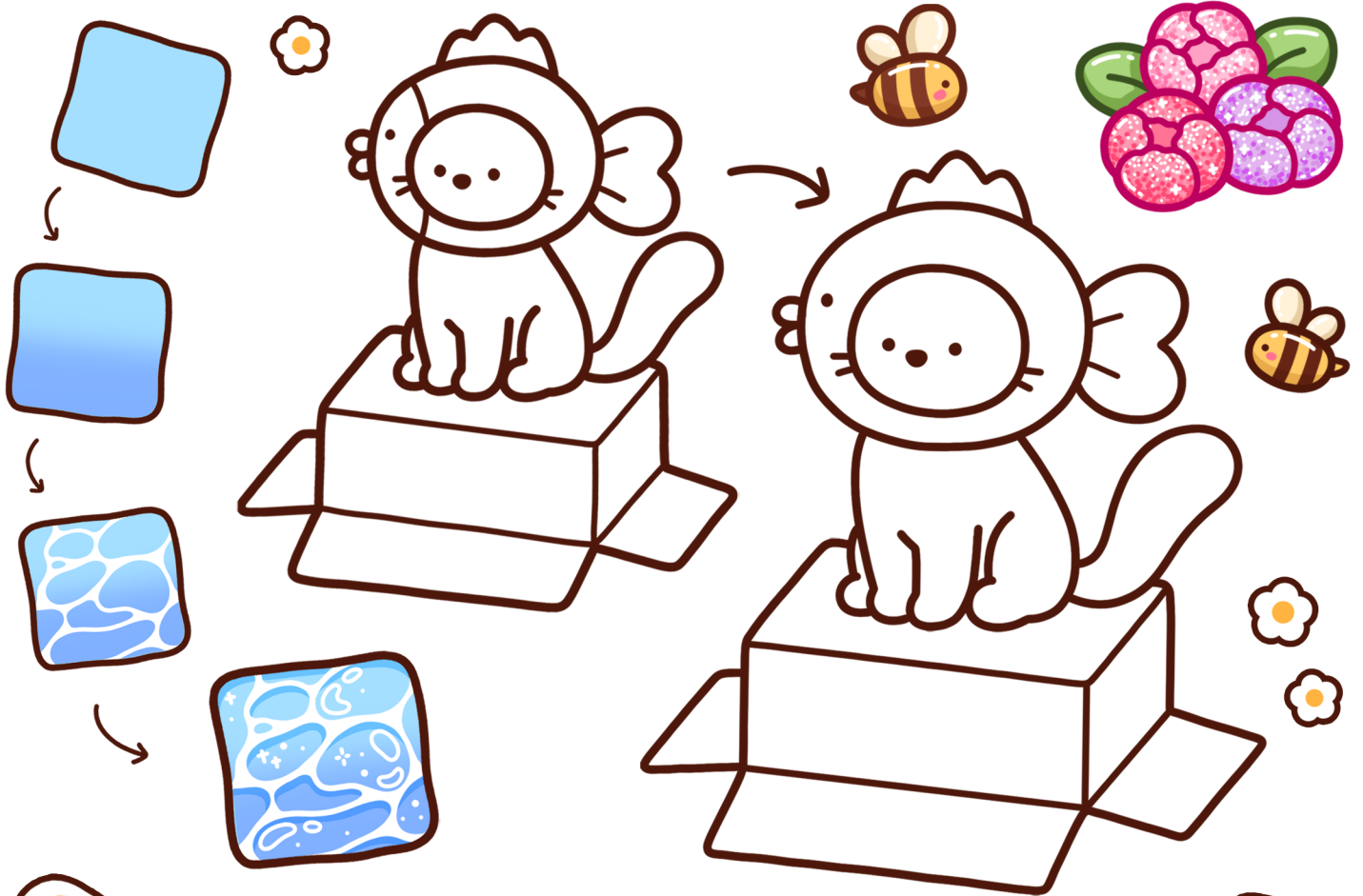
Step-by-Step Pattern Drawing Tutorial

Southern Lotus

# How to Draw EASY

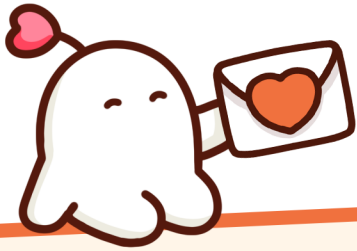
# PATTERNS

Sprinkle joy to your pages!



THIS BOOK BELONGS TO

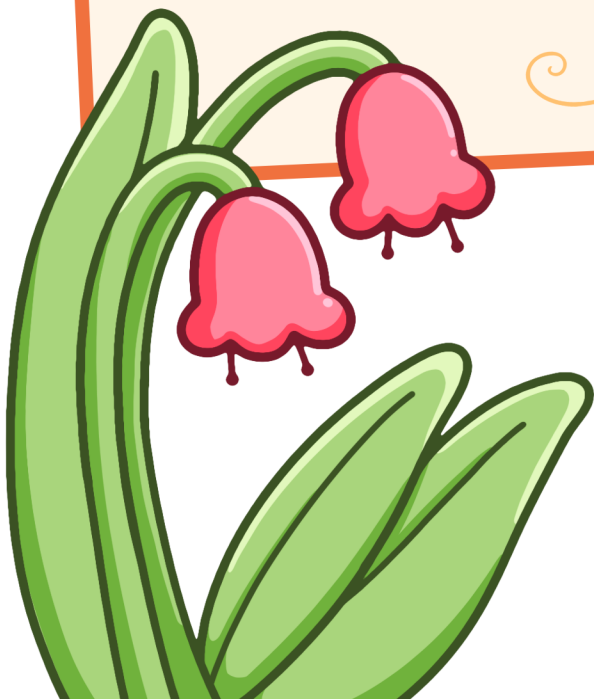
-----



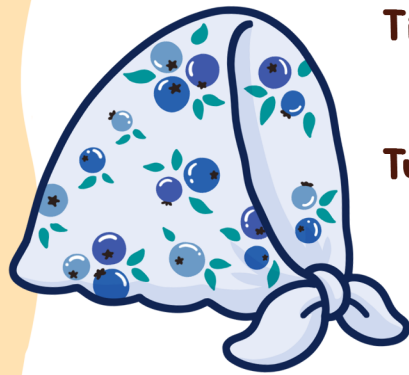
From Us to You

Every page is crafted with love and we hope coloring brings you peace, joy, and a little sparkle in your day. All things you need to know, there's no right or wrong way, here is your own creative space!

Will all our hearts,  
Southern Lotus



# TABLE OF CONTENTS



Tips & Tricks ..... 4

## Tutorials:

Wall ..... 7

Ground ..... 17

Floor ..... 21

Nature ..... 23

Fabric ..... 27

Water ..... 33

Light ..... 37

Effect ..... 39

Sky ..... 47

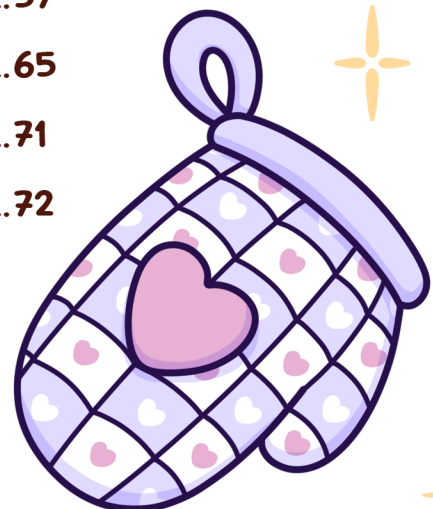
Weather ..... 53

Pattern ..... 57

Practice Page ..... 65

Color Palette ..... 71

Unique Freebie Gallery ..... 72



# TIPS & TRICKS



## TEST BEFORE YOU COLOR

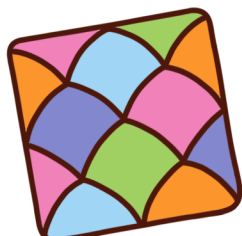
Use the color swatch pages to test your colors. →



## SHADING & HIGHLIGHT

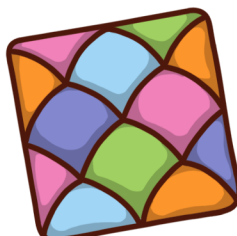
### 1 Base Color

Apply base colors. Let them dry completely.



### 2 Add Shadow

Use gray or a darker shade to add depth.



### 3 Add Highlight

Use a white pen to brighten edges or reflective spots.



# TIPS & TRICKS

## HOW TO DEFINE SHADOWS & HIGHLIGHTS

Imagine a light source.



Highlight goes where light hits directly



Shadow goes on the opposite side of the light.

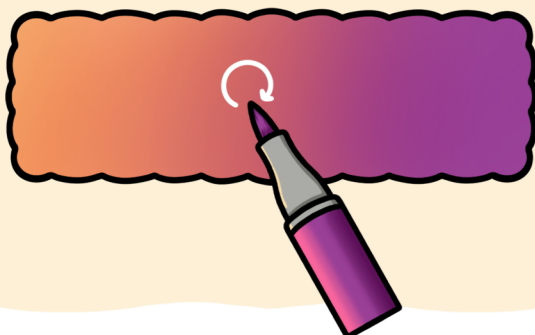
### Round objects = curved shadows

For round things, add shadows along the curve and highlights on the highest bump.



### BLENDING

While the color is still wet, add the next color and use circular motions for a smooth transition.



### OUTLINING



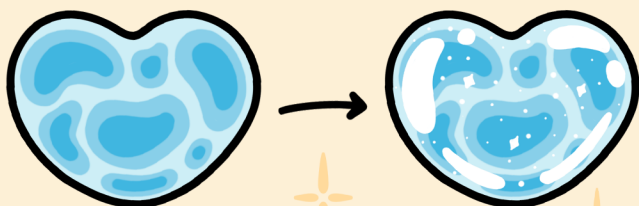
Edge outlines



Double/Shadow lines

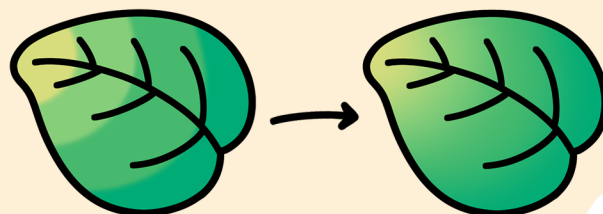
### ADD DETAILS

Use gel pens or acrylic markers to add accents or textures.



### BLENDER MARKER

Use a colorless blender in circular motions while the ink is still wet to achieve a smoother blend.



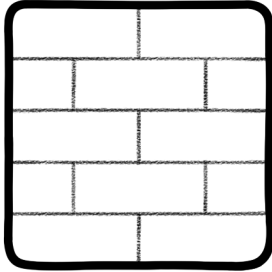
**Let's  
start!**



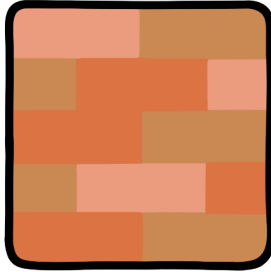
# WALL

## • Brick ○ ● ● ● ●

1 Draw brick patterns using a pencil



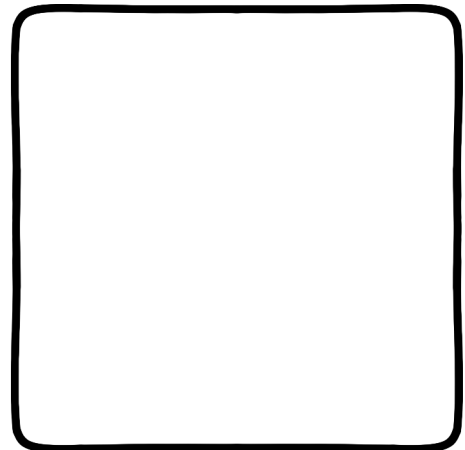
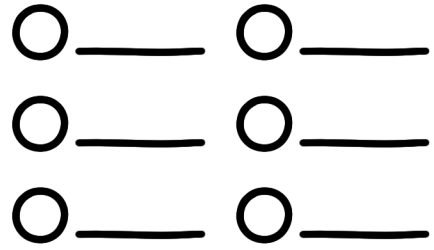
2 Color each brick with different colors



3 Shade and fill the gaps between bricks

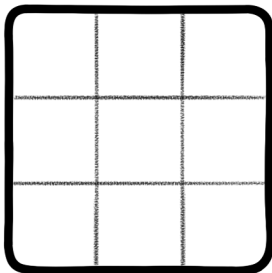


4 Add highlights using a white acrylic pen

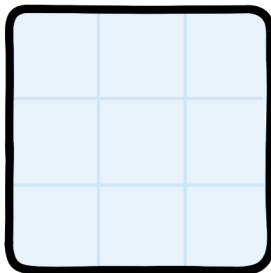


## • Tile ○ ○ ○ ●

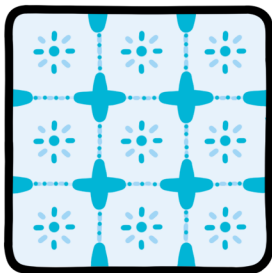
1 Draw grid lines using a pencil



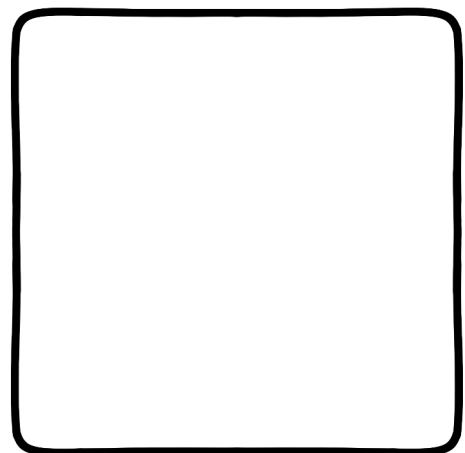
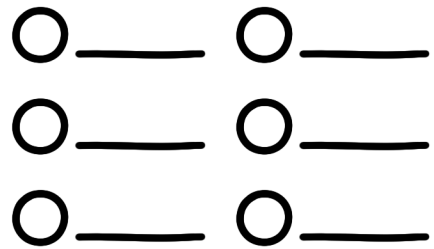
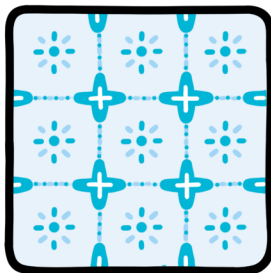
2 Color the base and let it completely dry



3 Add patterns in the middle and edges of the tiles



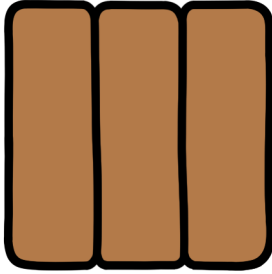
4 Add highlights using a white acrylic pen



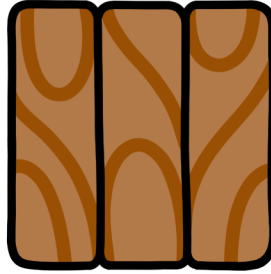
# WALL

## • Wood ○ ● ●

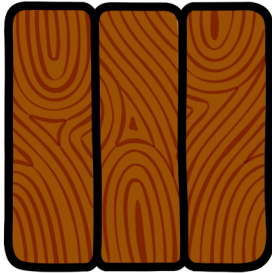
1 Color the base and let it completely dry



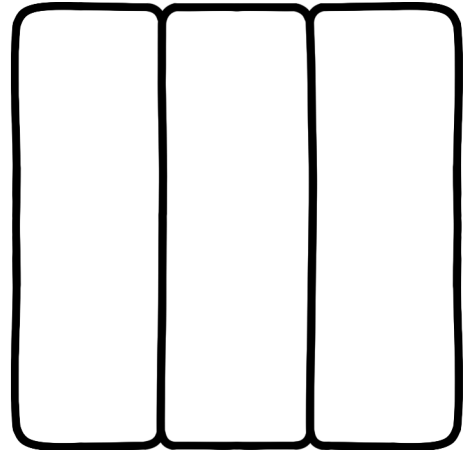
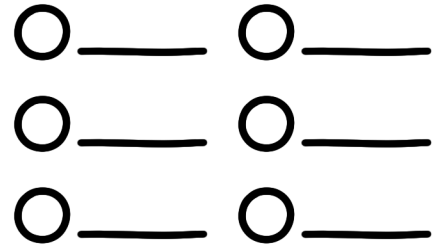
2 Draw wood grain lines with a darker brown



3 Repeat to fill the plank, then shade the edges

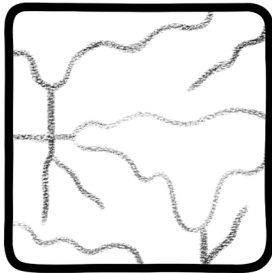


4 Add highlights with a white acrylic pen

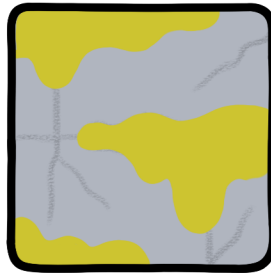


## • Stone ○ ● ● ● ● ● ●

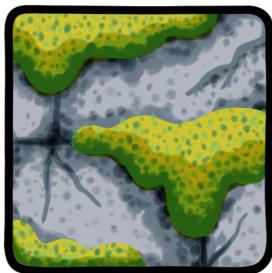
1 Draw stone shapes and moss with a pencil



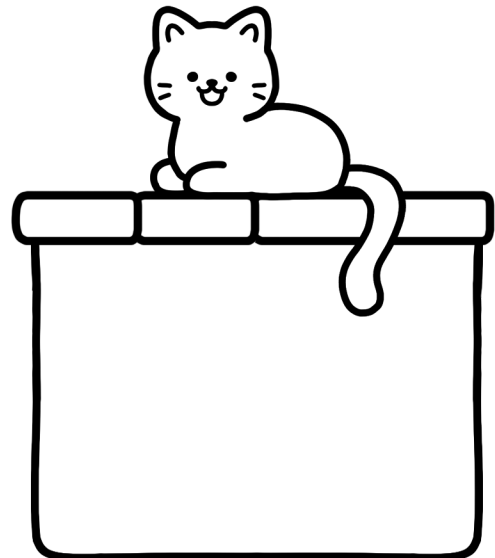
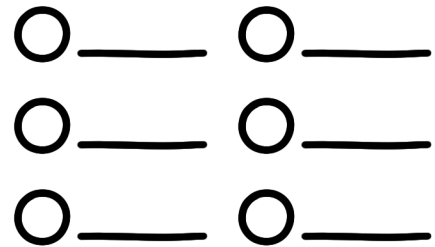
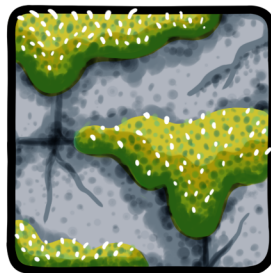
2 Color the base and let it completely dry



3 Shade along the lines and dot with darker colors



4 Draw moss strands with an acrylic pen

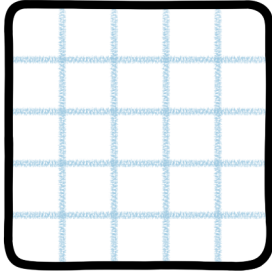


# WALL

## • Backsplash



1 Draw grid lines using a pencil



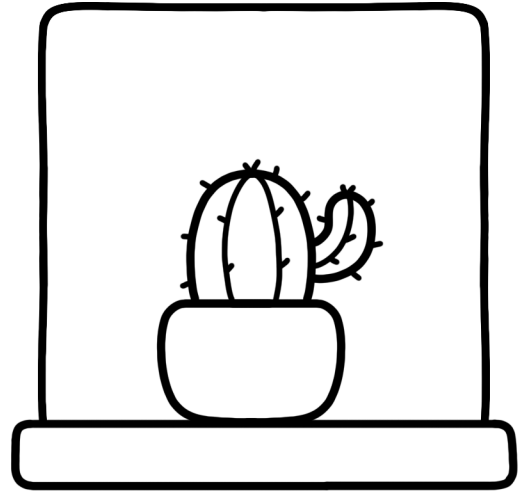
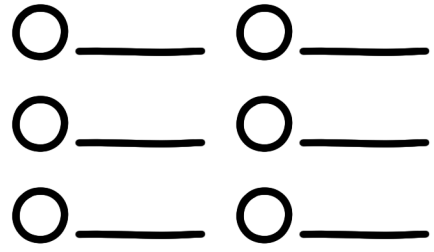
2 Color each tile alternately



3 Add shadows to the edges and between tiles



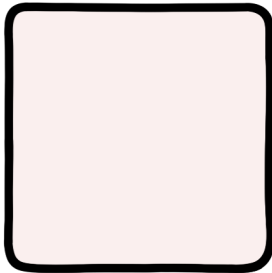
4 Add highlights with a white acrylic pen



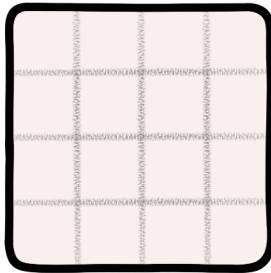
## • Geometric



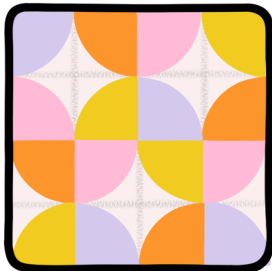
1 Color the base and let it completely dry



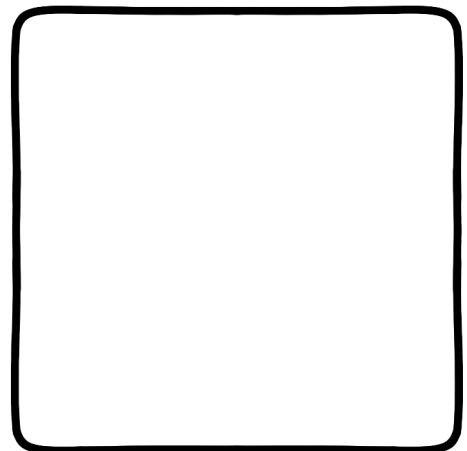
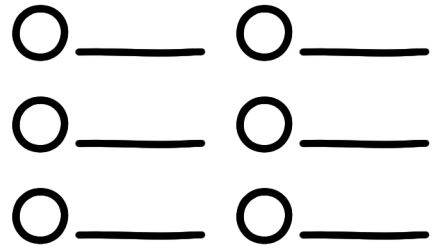
2 Draw grid lines using a pencil



3 Draw random quarter circles in each square



4 Use an eraser to remove extra lines

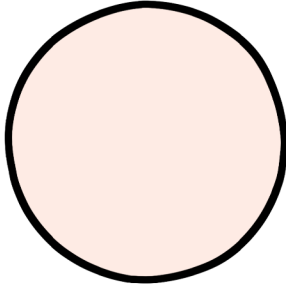


# WALL

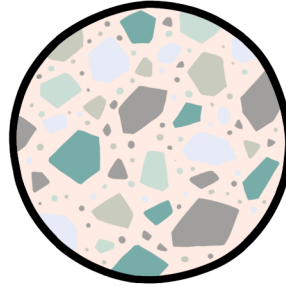
## • Terrazzo



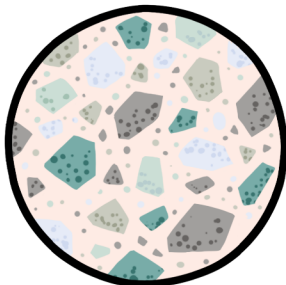
1 Color the base and let it completely dry



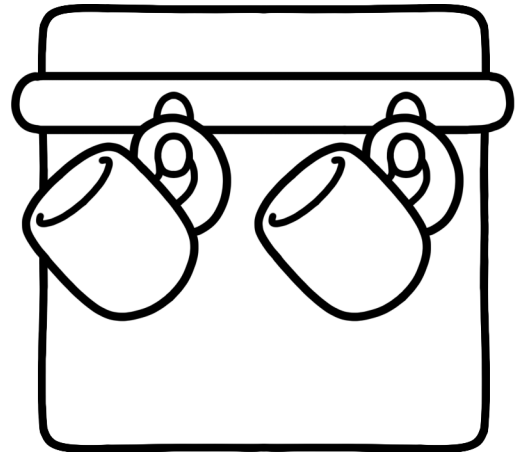
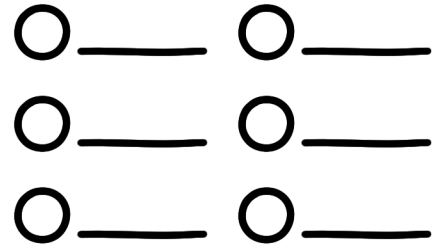
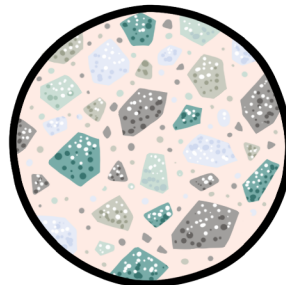
2 Draw random shapes with different colors



3 Dot each shape with a darker color



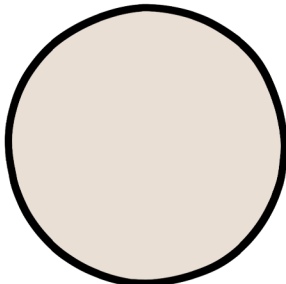
4 Add highlights with a white acrylic pen



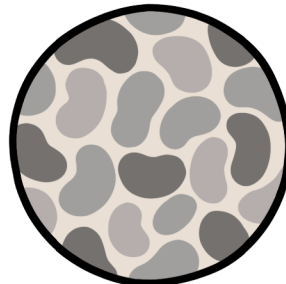
## • Cobble Stone



1 Color the base and let it completely dry



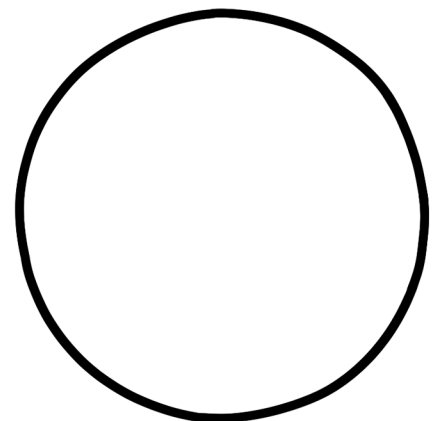
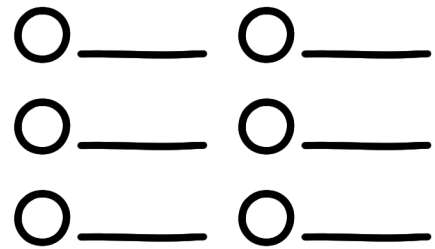
2 Draw random shapes with different colors



3 Add shadows with darker colors



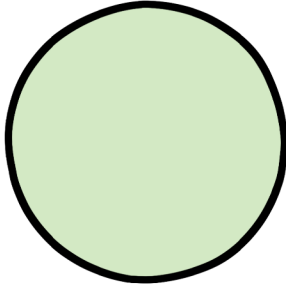
4 Add highlights with a white acrylic pen



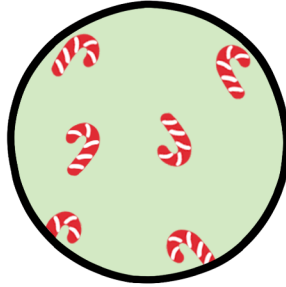
# WALL

## • Xmas ○ ● ● ● ●

1 Color the base and let it completely dry



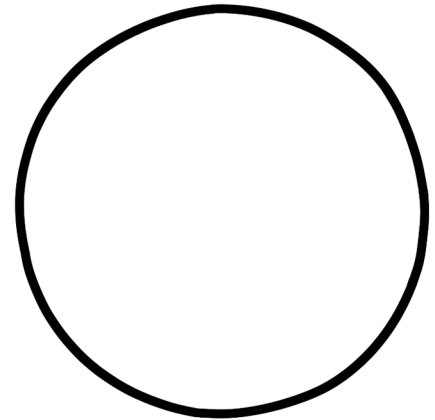
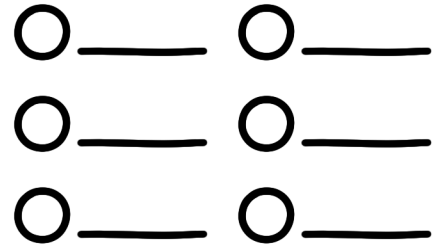
2 Draw candies with red and white acrylic pens



3 Draw pine trees with green and yellow acrylic pens



4 Add random white dots with an acrylic pen

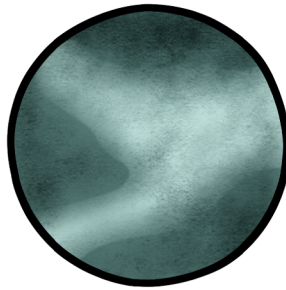


## • Cement ○ ● ● ● ● ●

1 Color the base with light and dark shades



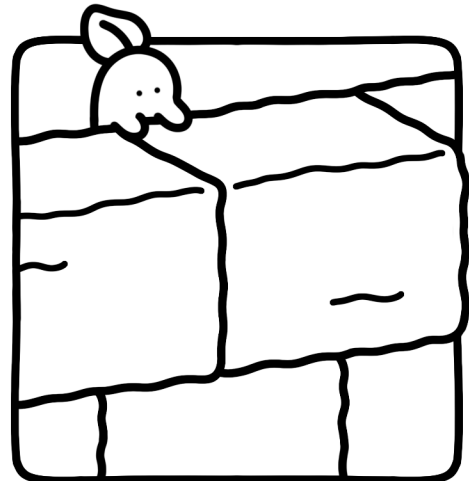
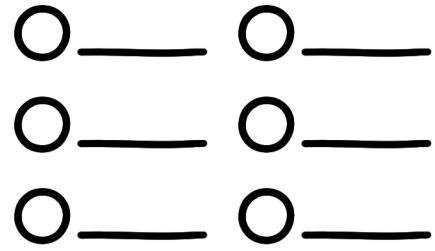
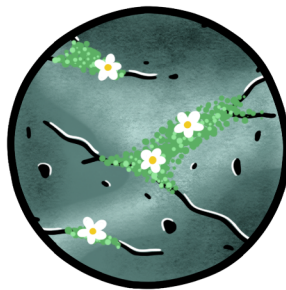
2 Blend the colors with a light shade



3 Draw cracks using a black acrylic pen



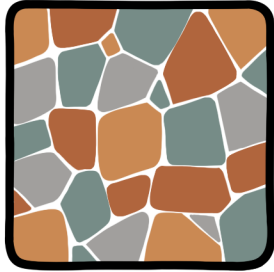
4 Add moss, flowers, & highlights with colored acrylic pens



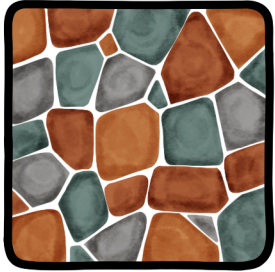
# GROUND

## • Rock

**1** Draw random rocks with different colors



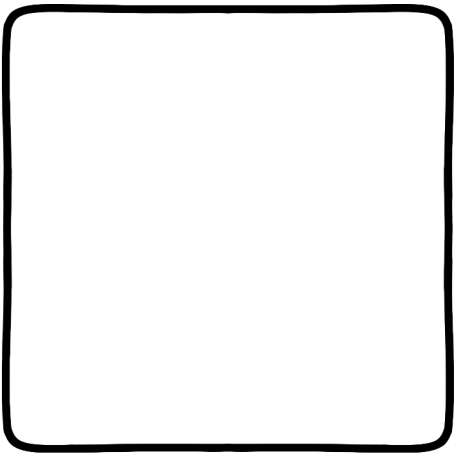
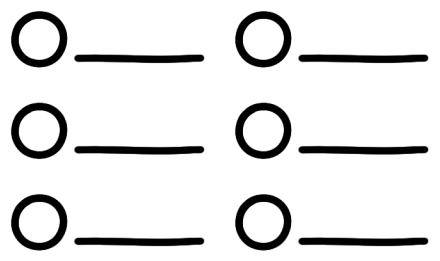
**2** Use a colorless blender for texture



**3** Fill the gaps with black color

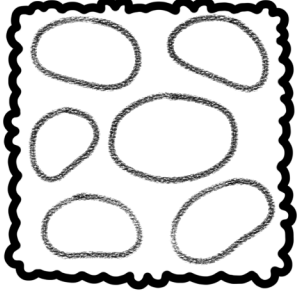


**4** Add highlights with a white acrylic pen



## • Stone Path

**1** Draw stone shapes using a pencil



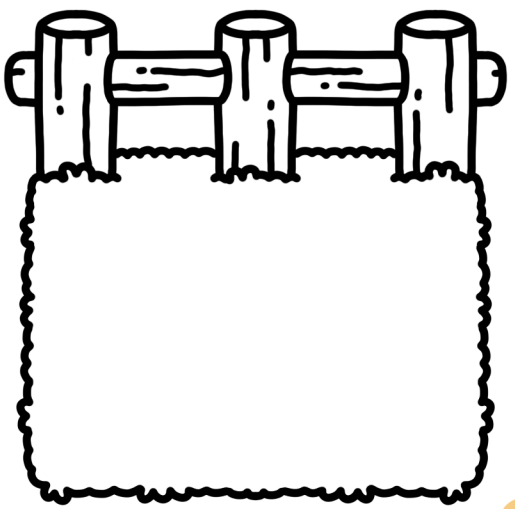
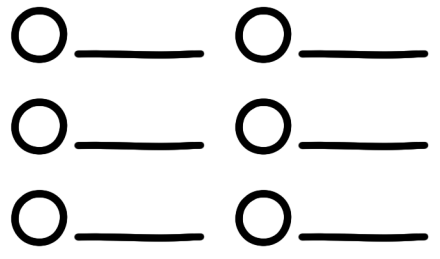
**2** Color with light and dark tones, then blend smoothly



**3** Fill the gaps between stones with green



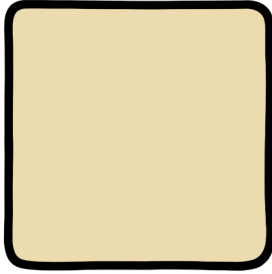
**4** Add grass by dotting green, yellow and white acrylic pens



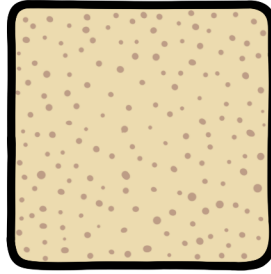
# GROUND

## • Sand ○ ● ● ●

1 Color the base and let it completely dry



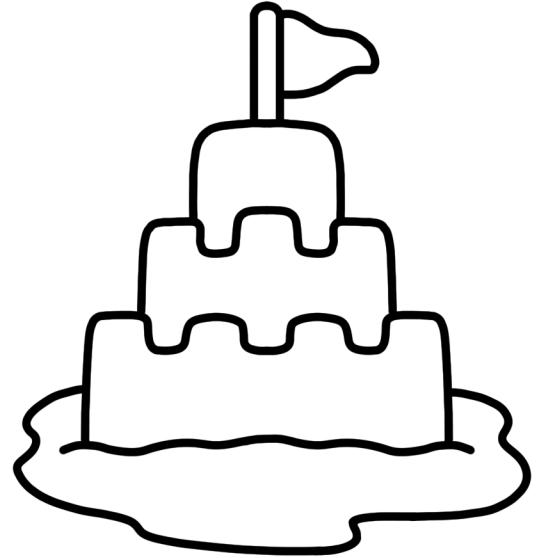
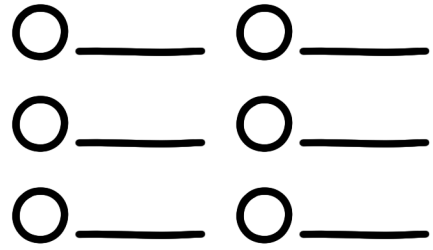
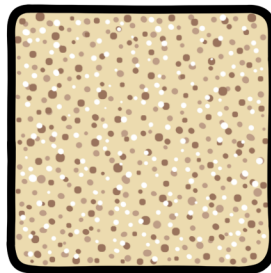
2 Add dots using a light tone



3 Layer more dots with a darker tone

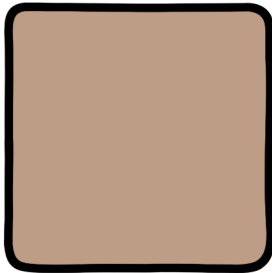


4 Dot with a white acrylic pen

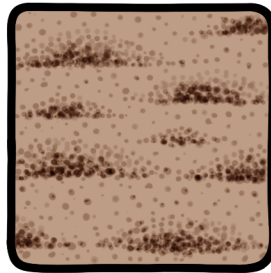


## • Soil ○ ● ● ● ●

1 Color the base and let it completely dry



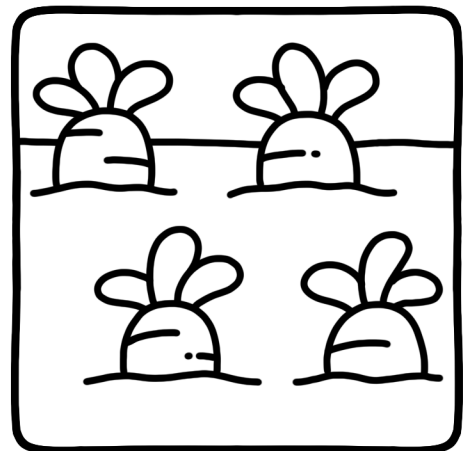
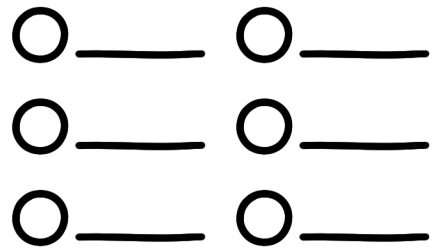
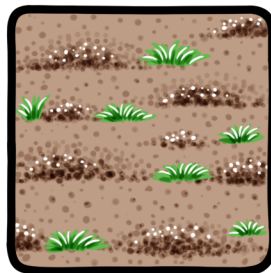
2 Dot random areas with darker tones



3 Draw grass using a green acrylic pen



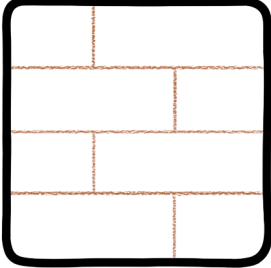
4 Add highlights with a white acrylic pen




# FLOOR

## • Wood ○ ● ● ● ●

**1** Draw wood planks with a pencil



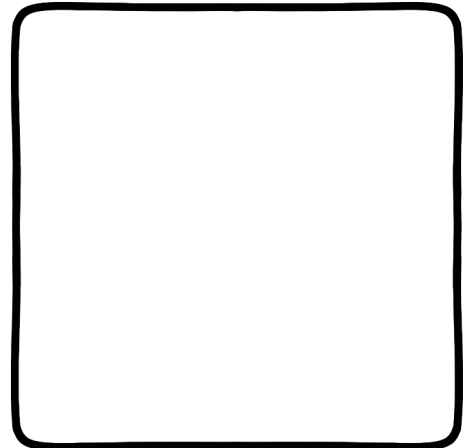
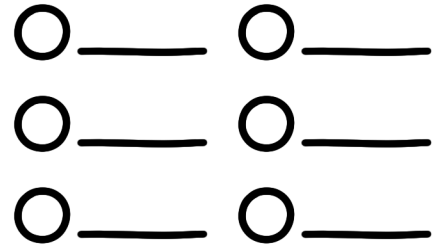
**2** Color the base, then darken the edges



**3** Draw random wood grains with a dark tone



**4** Add highlights with a white acrylic pen



## • Marble ○ ○ ● ●

**1** Color the base and let it dry



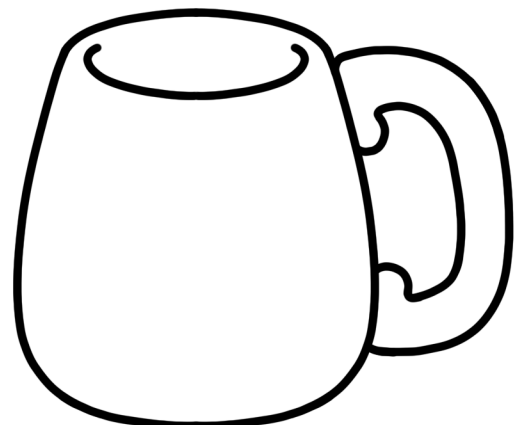
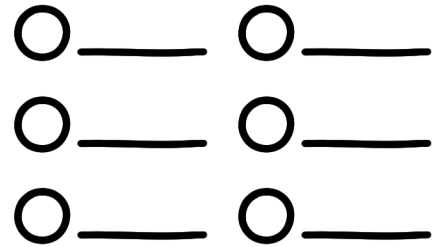
**2** Draw marble veins with a dark color



**3** Shade along the marble veins



**4** Add highlights with a white acrylic pen



# NATURE

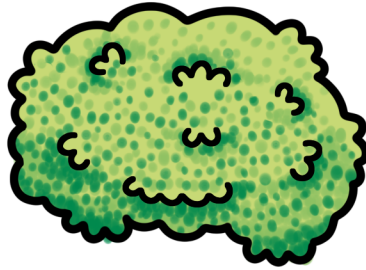
## • Tree



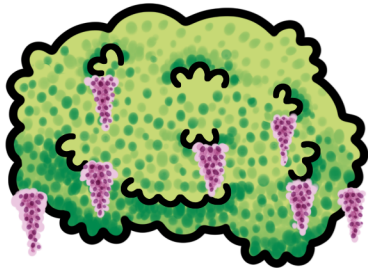
1 Color the base with a light color



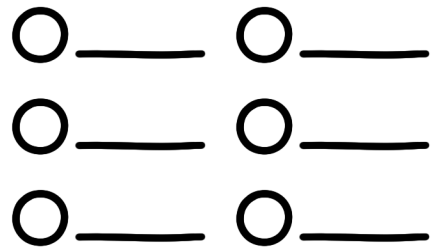
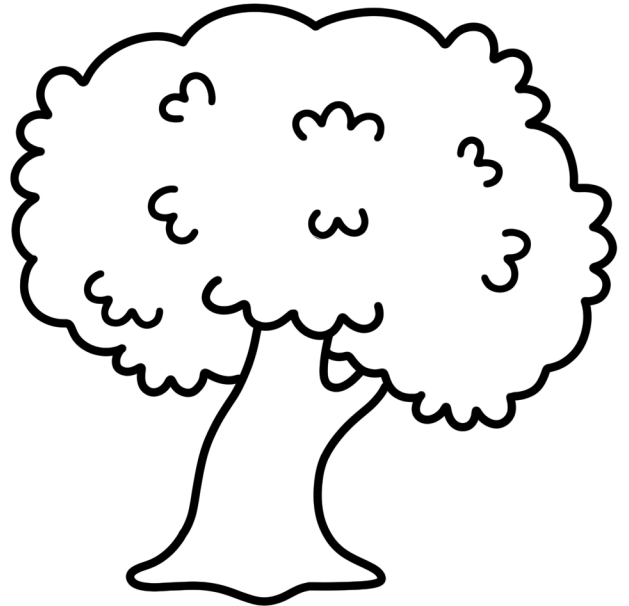
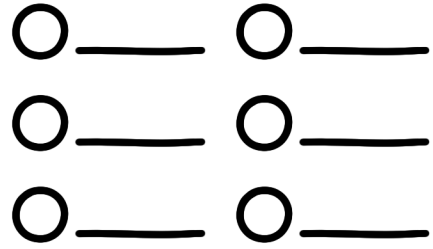
2 Add texture by dotting darker shades



3 Draw flower clusters with an acrylic pen



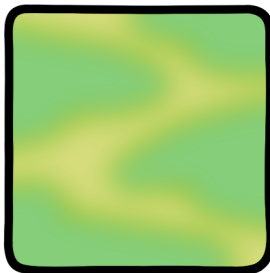
4 Add dots with yellow and white acrylic pens



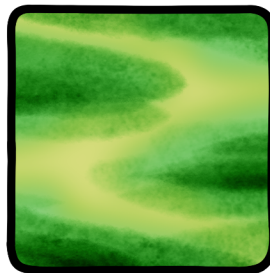
## • Grass



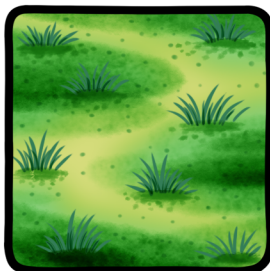
1 Color random patches then blend with a colorless blender



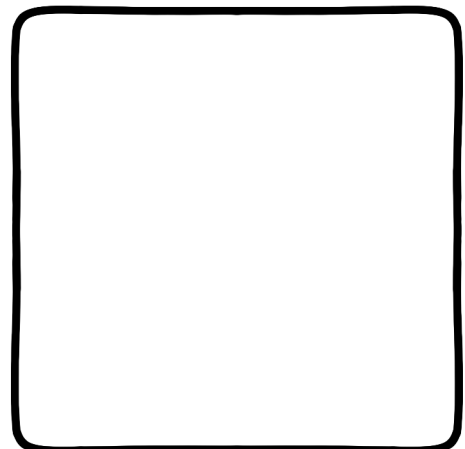
2 Add another layer of darker green



3 Draw grass clumps and dot with the darkest shade



4 Add white blades and dots with a white acrylic pen

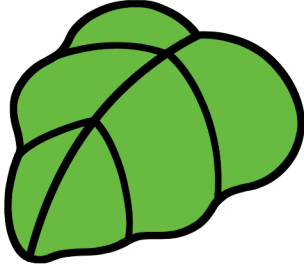


# NATURE

## • Leaf



1 Color the base and let it completely dry



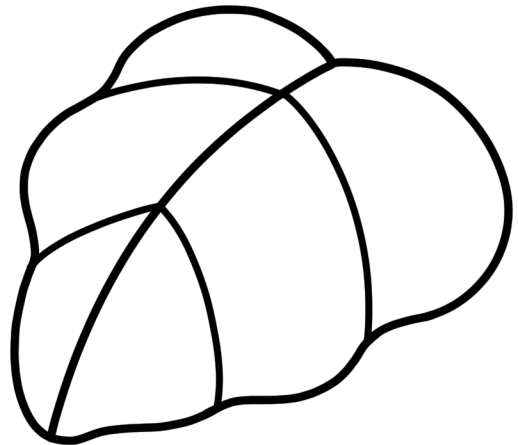
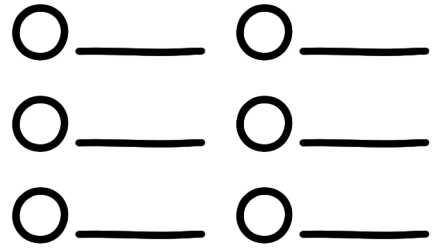
2 Draw patches with a light acrylic pen



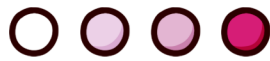
3 Add darker tones on top of those patches



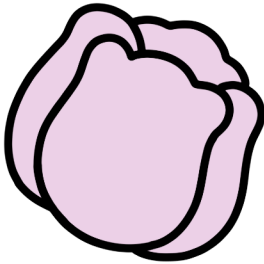
4 Add highlights with a white acrylic pen



## • Glassy Flower



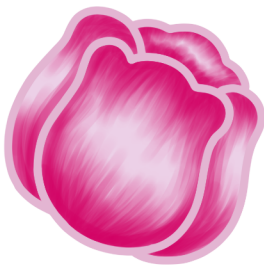
1 Color the base and let it completely dry



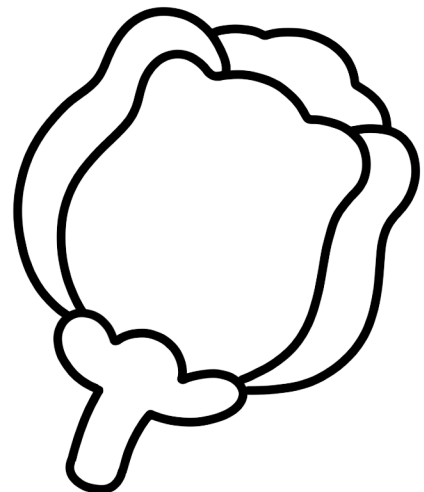
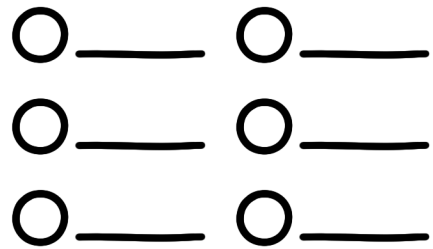
2 Add shadows using a darker shade



3 Outline petal edges with an acrylic pen



4 Add highlights with a white acrylic pen

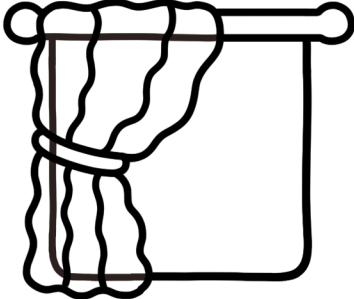


# FABRIC

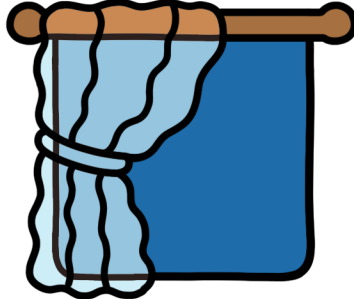
## Lace



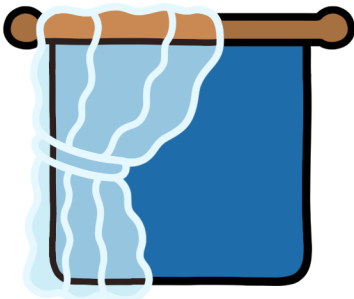
1 Draw hidden lines using a black pen



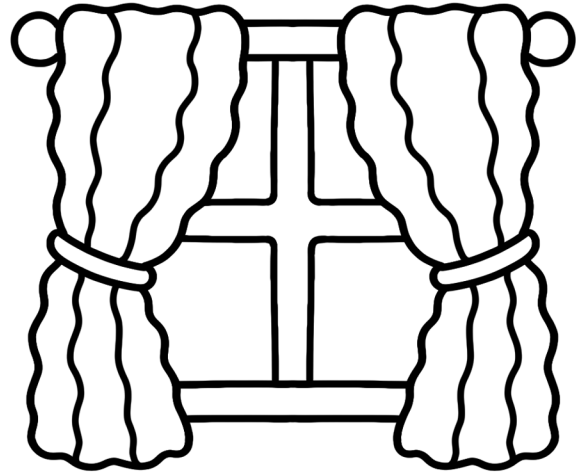
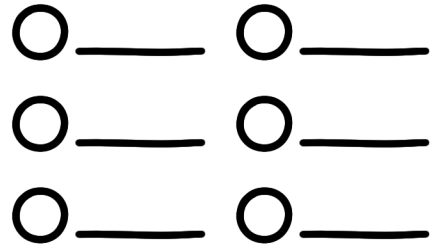
2 Color the background and hidden areas



3 Cover the lines of the curtain with an acrylic pen



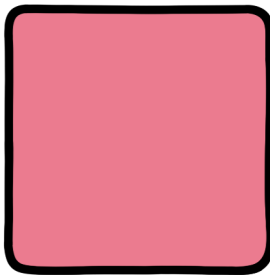
4 Create a lace effect by dotting & drawing patterns



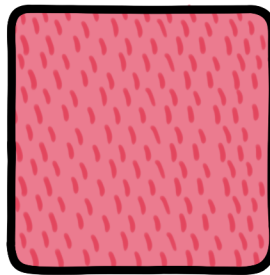
## Furry



1 Color the base with a light color



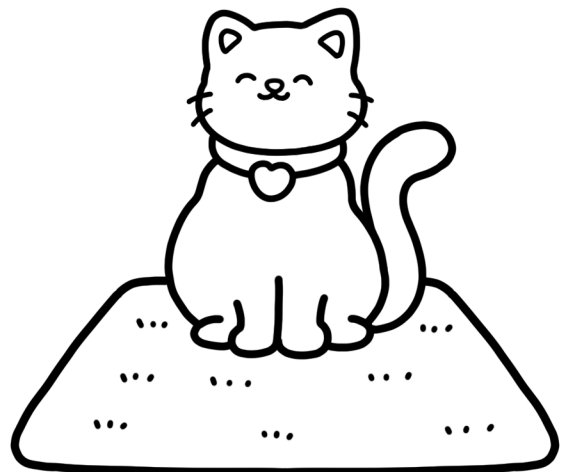
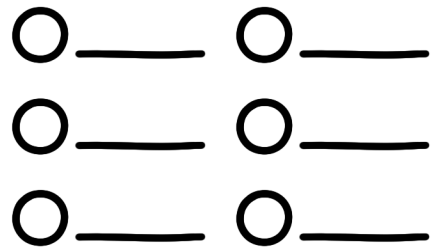
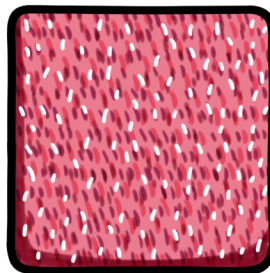
2 Draw short lines with a darker color



3 Add more short lines on top with the darkest color



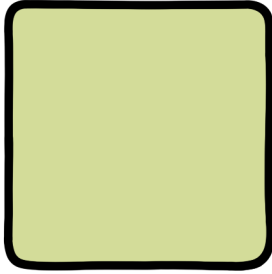
4 Add white short lines with a white acrylic pen



# FABRIC

## • Camo

1 Color the base and let it completely dry



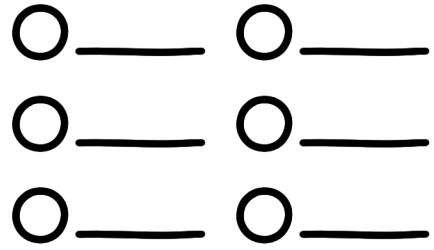
2 Draw random brown camo shapes



3 Layer darker green camo shapes

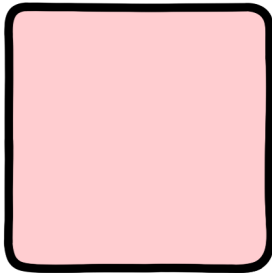


4 Add the darkest green camo shapes on top

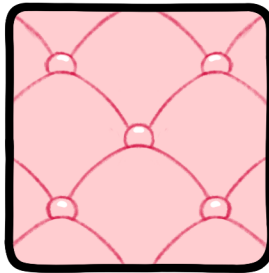


## • Capitone

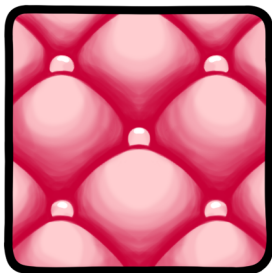
1 Color the base with a light color



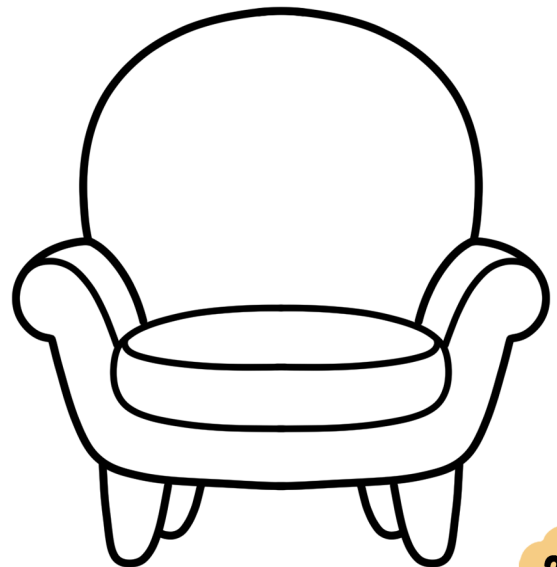
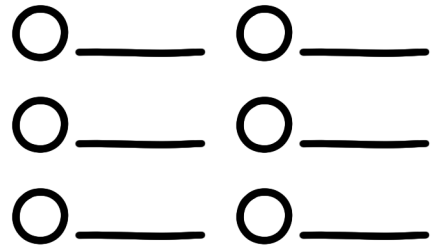
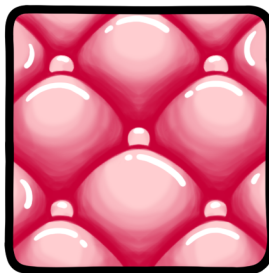
2 Draw grid lines using a pencil



3 Shade along the lines and blend for a puffed effect



4 Add highlights with a white acrylic pen



# FABRIC

## • Tie Dye

1 Draw short lines following random circular paths



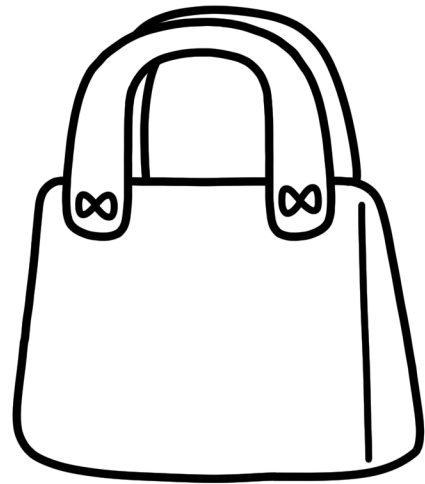
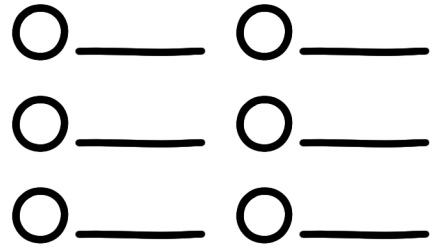
2 Layer different colors until the area is filled



3 Repeat these steps one more time

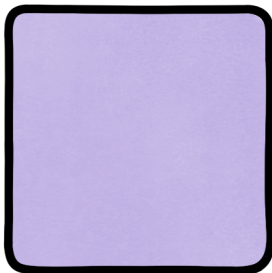


4 Add highlights with a white acrylic pen

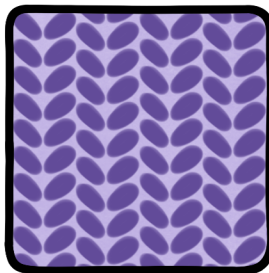


## • Crochet

1 Color the base and let it completely dry



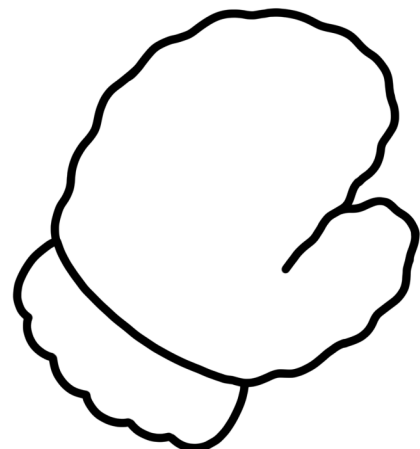
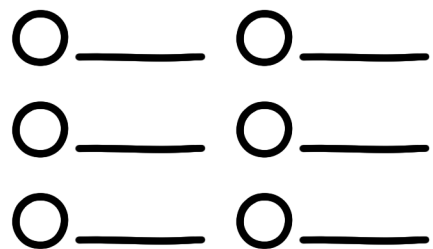
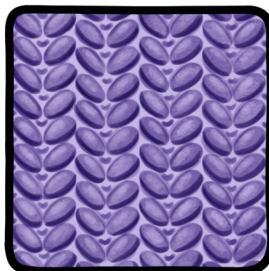
2 Draw the crochet strands with a darker color



3 Use a colorless blender color over the yarns



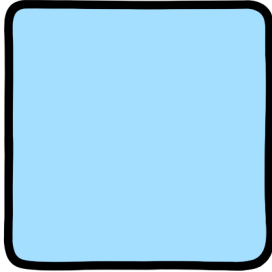
4 Add shading between the gaps for depth



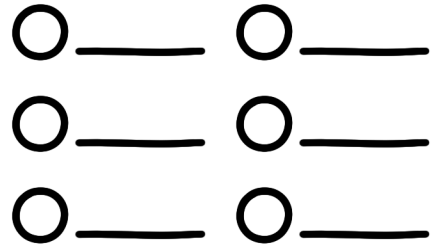
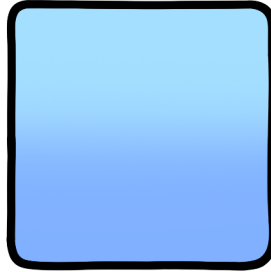
# WATER

## • Water ○ ○ ○ ○

1 Color the base with a light color



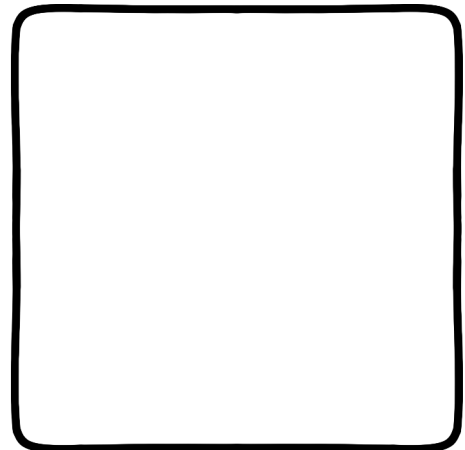
2 Add a darker color while it's still wet to create a gradient effect



3 Draw water reflections with a white acrylic pen

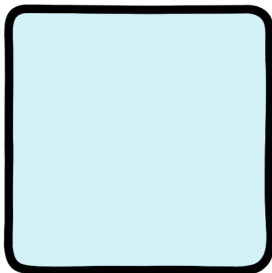


4 Shade the reflections with a light color

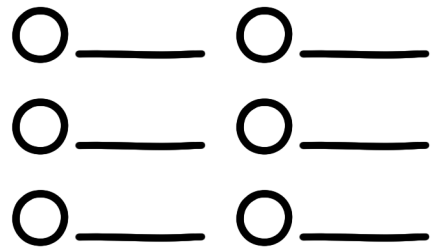
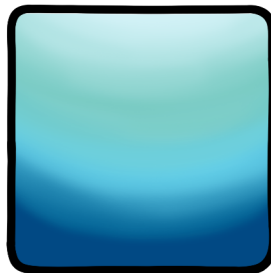


## • Underwater ○ ○ ○ ○ ○ ○

1 Color the base with a light color



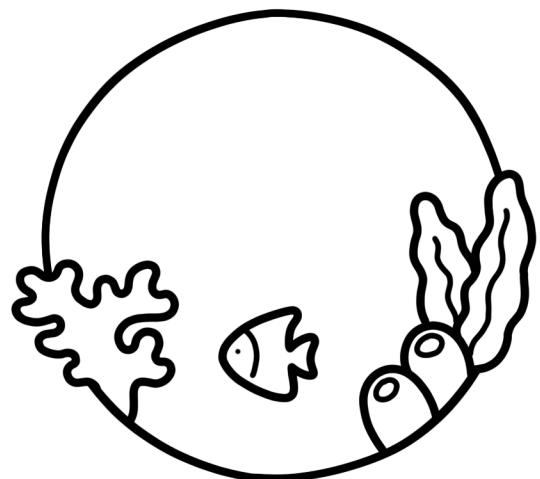
2 Layer more colors from light to dark when it's still wet



3 Draw water reflections with a white acrylic pen



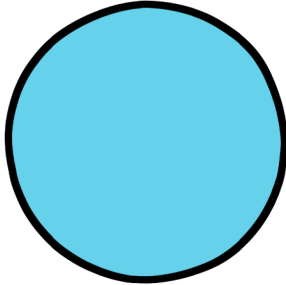
4 Add light reflections with a white pencil



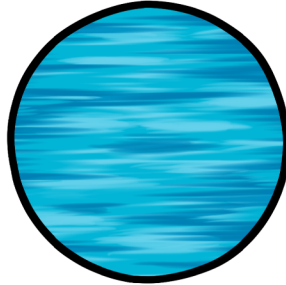
# WATER

## • Steam ○ ● ● ● ●

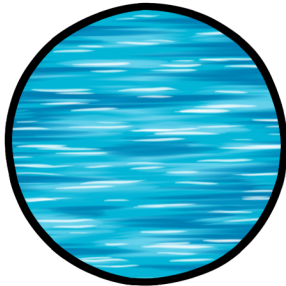
1 Color the base with a light color



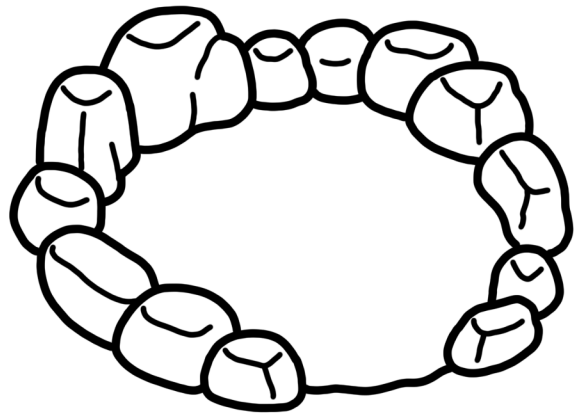
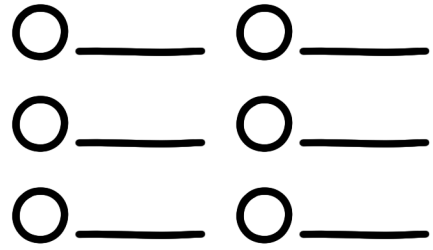
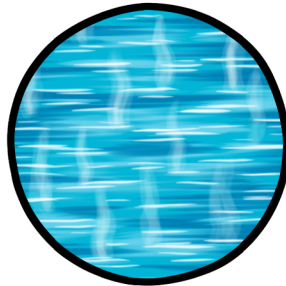
2 Add horizontal strokes to create water effect



3 Add small water lines with a white acrylic pen



4 Draw steam above the surface using a white pencil



## • Magic Water ○ ● ● ● ● ● ●

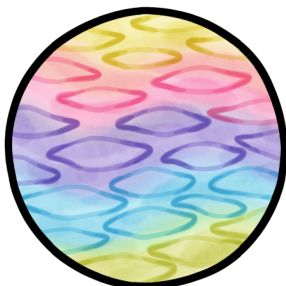
1 Color the base using different bright colors



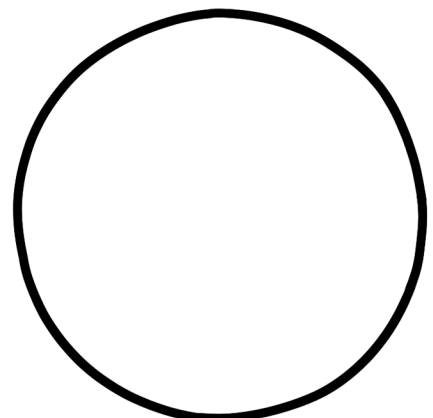
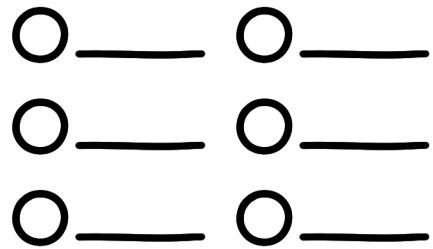
2 Blend these colors with a colorless blender



3 Draw water ripples with darker shades



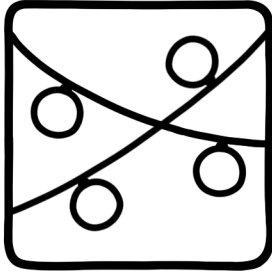
4 Add water reflections with a white acrylic pen



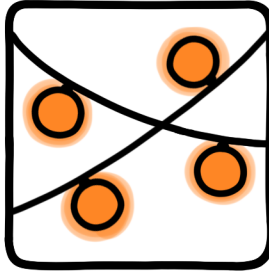
# LIGHT

## • Glowing Light ○ ● ●

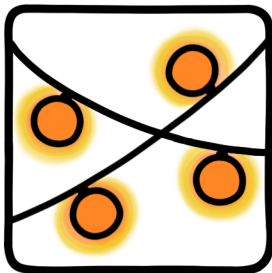
1 Draw light bulbs using a black pen



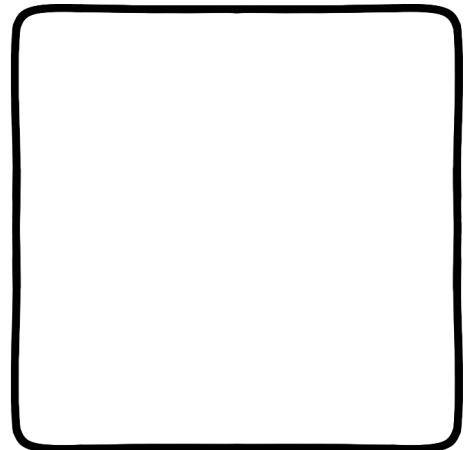
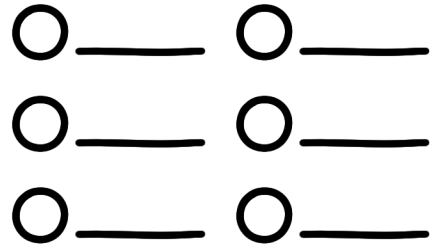
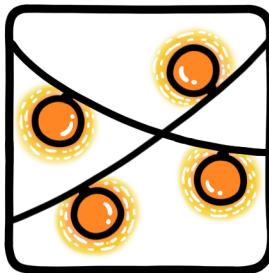
2 Color the base inside and around the bulb



3 Blend the outer glow with a lighter shade

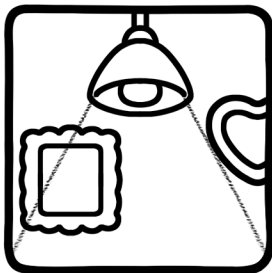


4 Dot and highlight with a white acrylic pen

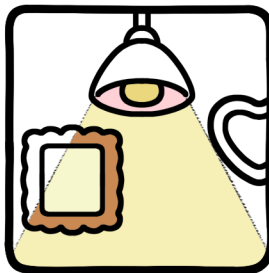


## • Light Source ○ ● ● ● ● ●

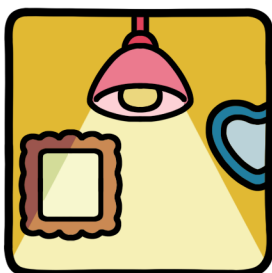
1 Draw the light zone using a pencil and a ruler



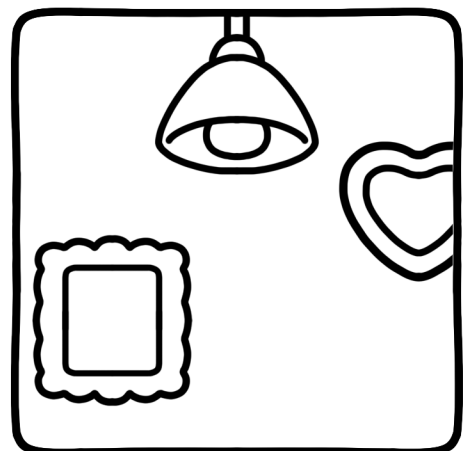
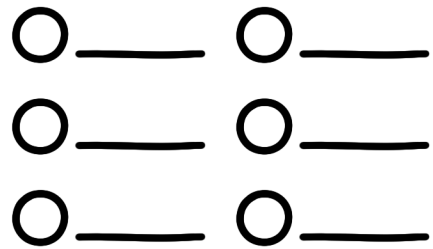
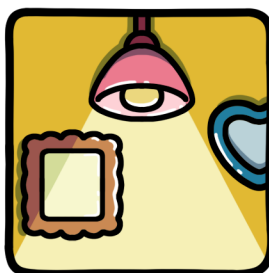
2 Color inside the light zone with light shades



3 Use darker shades for both sides of the light zone



4 Add shadows on the opposite side and highlight with a white acrylic pen

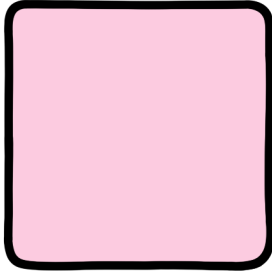


# EFFECT

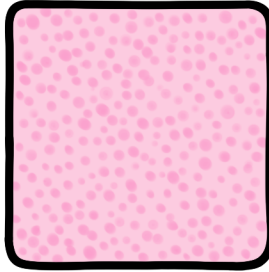
## • Glitter



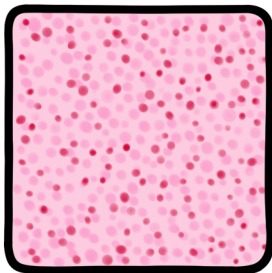
1 Color the base and let it completely dry



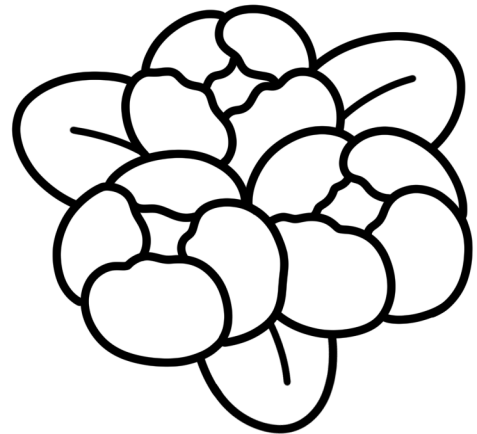
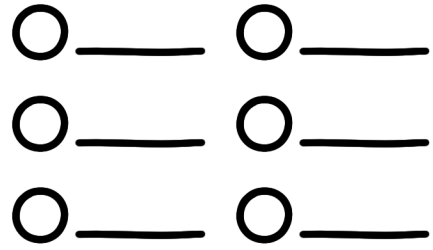
2 Fill the entire object with dots using a medium shade



3 Layer more dots using the darkest shade



4 Add dots and sparkles with a white acrylic pen



## • Neon



1 Color from light to dark, inside out



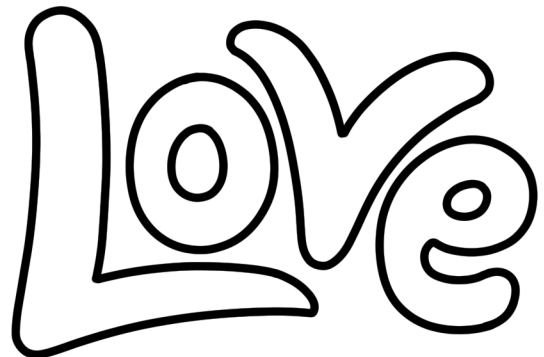
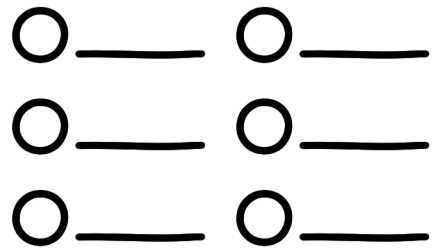
2 Fill around the object with the same medium color



3 Add highlights with a white acrylic pen



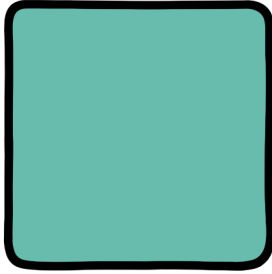
4 Trace the inner border with a white acrylic pen



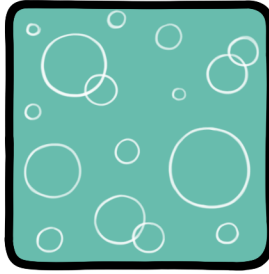
# EFFECT

## • Bubble ○ ●

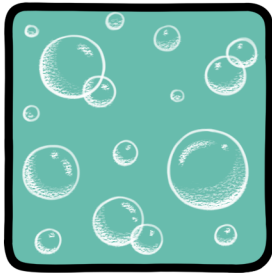
1 Color the background and let it completely dry



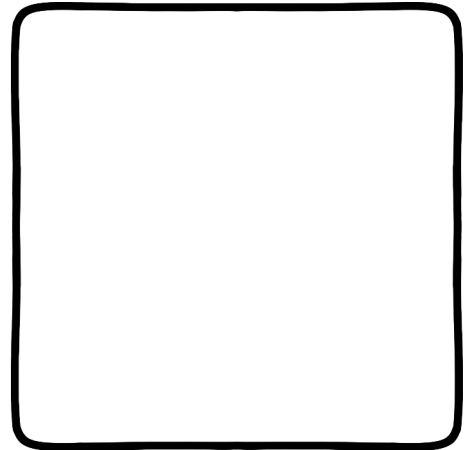
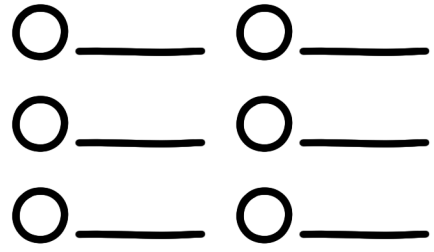
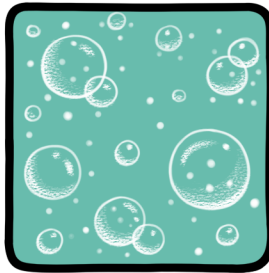
2 Draw random circles using a white gel pen



3 Use a white pencil to add blur effect for the bubbles

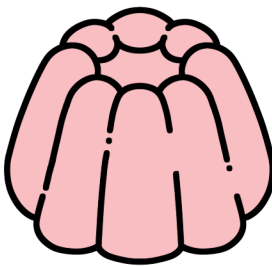


4 Add dots and highlights with a white acrylic pen

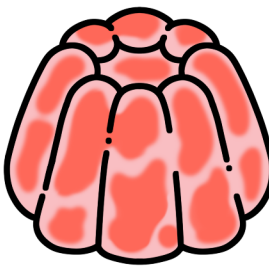


## • Jelly ○ ●●●

1 Color the base and let it completely dry



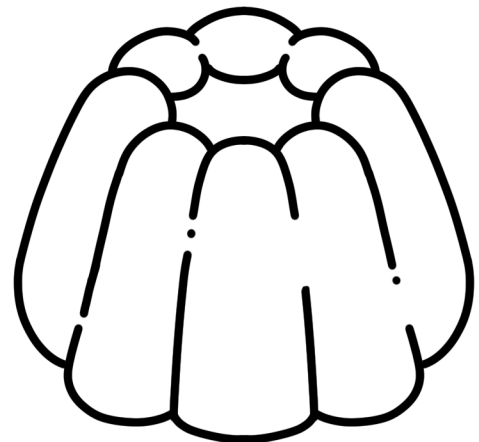
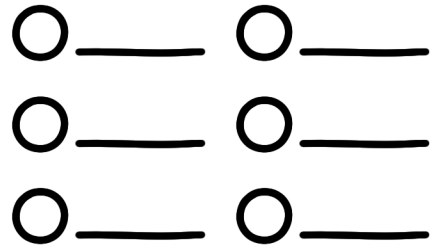
2 Draw random wobbly shapes with a dark color



3 Add spots inside the shapes using darker tone



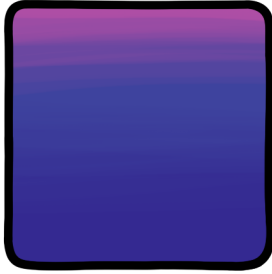
4 Add extra shapes and sparkles with a white acrylic pen



# EFFECT

## • Firework ○ ● ● ● ● ●

1 Color a gradient base and let it completely dry



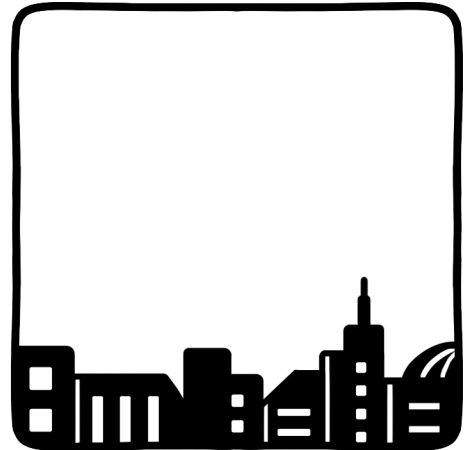
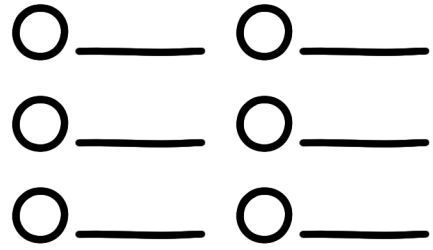
2 Draw firework lines using an acrylic pen



3 Keep adding more lines until it's full of color

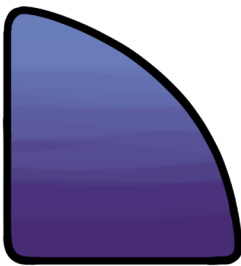


4 Add dots and highlights with a white acrylic pen

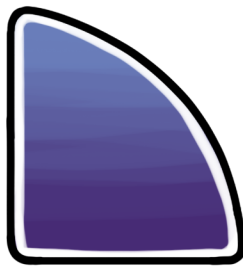


## • Frosty ○ ● ●

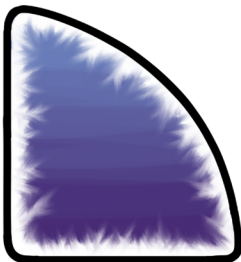
1 Color a gradient base and let it completely dry



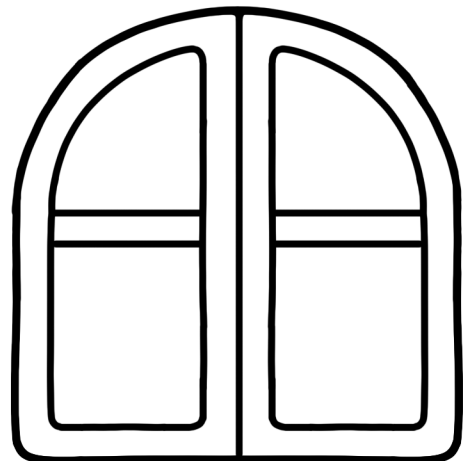
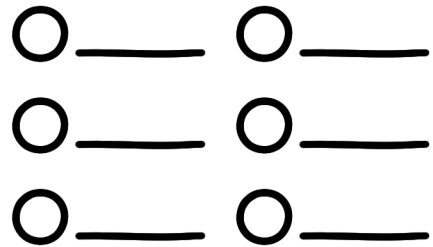
2 Draw along the edges of the panes with a white acrylic pen



3 Smudge the white inward for a frosted effect



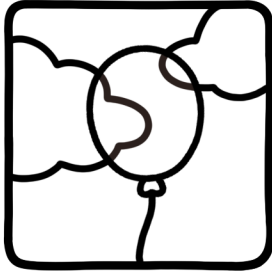
4 Add snowflakes using a white acrylic pen



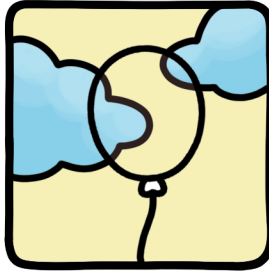
# EFFECT

## • Transparent ○ ○ ○

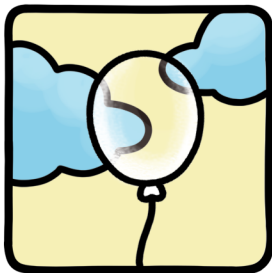
1 Draw hidden lines using a black pen



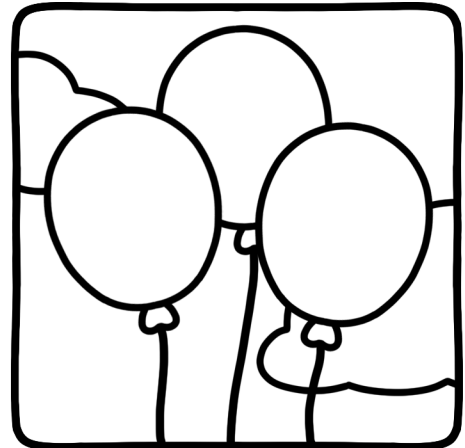
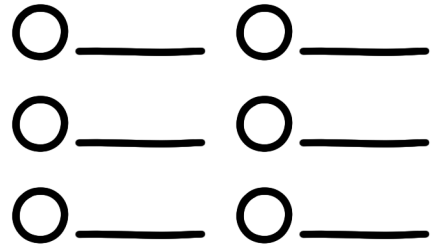
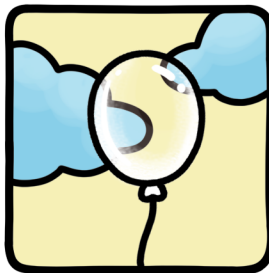
2 Color the background and let it completely dry



3 Use a white pencil to create the transparent effect

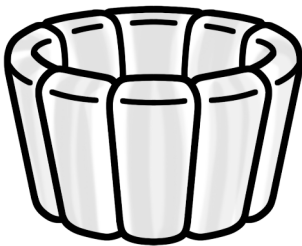


4 Add highlights with a white acrylic pen

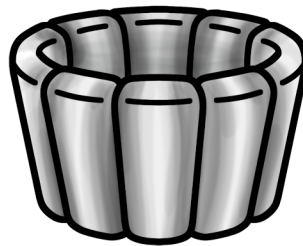


## • Silver ○ ○ ○ ○

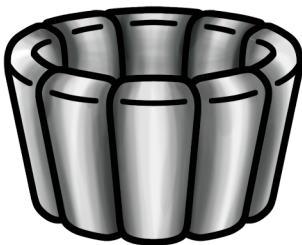
1 Color the center area using a light gray



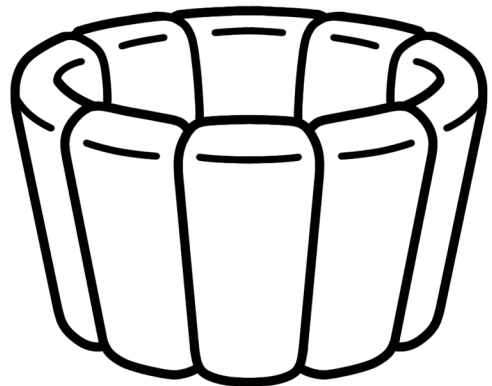
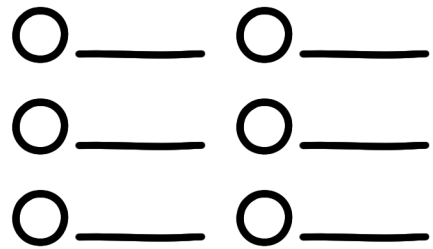
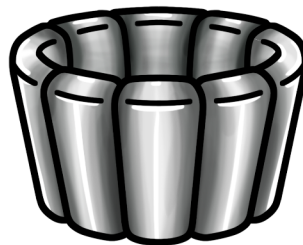
2 Add darker gray next to the light gray



3 Deepen the edges with the darkest gray



4 Add highlights with a white acrylic pen



# SKY

## • Dreamy

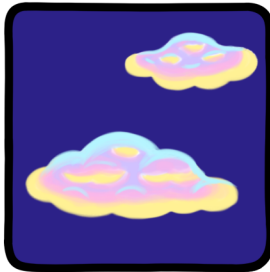
1 Draw clouds with a pencil



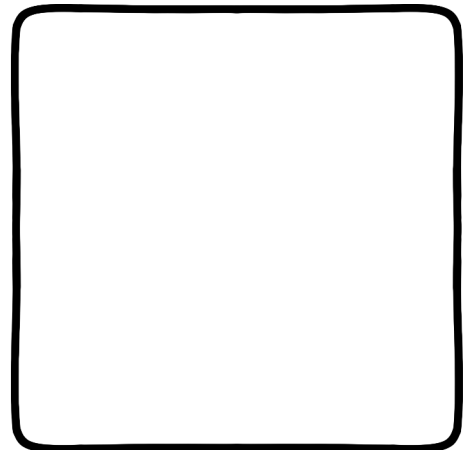
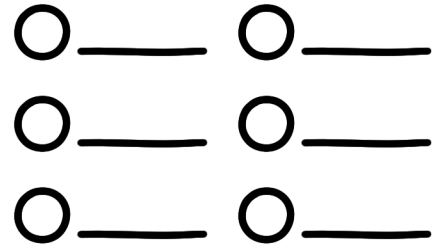
2 Color the background with a dark shade



3 Fill the clouds with different colors and blend using a colorless blender

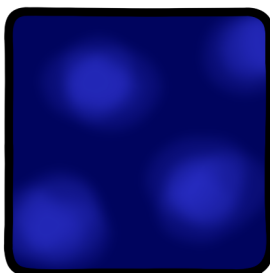


4 Outline and highlight with a white acrylic pen. Add dots and sparkles

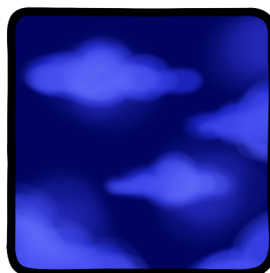


## • Night Sky

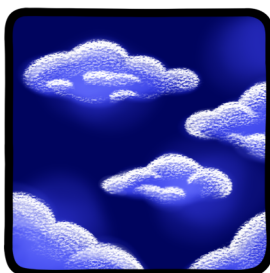
1 Color random spots with a lighter shade & fill the rest with a darker shade



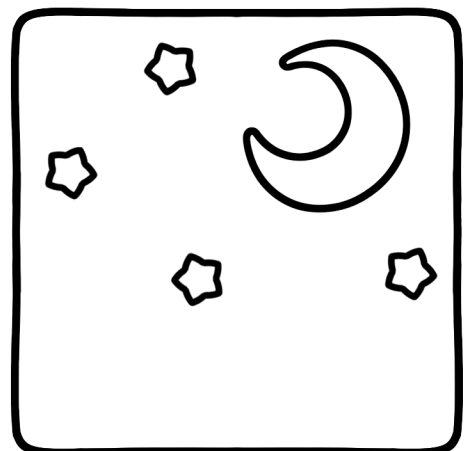
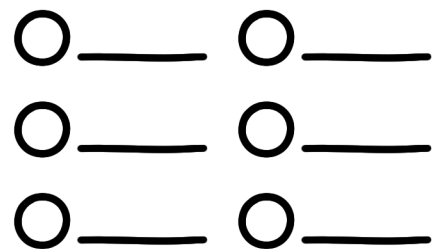
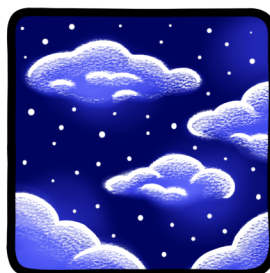
2 Use a colorless blender to draw clouds over the lighter areas



3 Add texture to the clouds using a white pencil



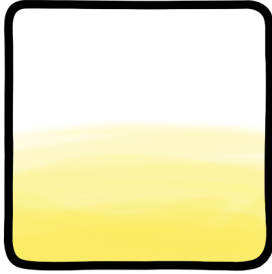
4 Add highlights and stars using a white acrylic pen



# SKY

## • Sunset

1 Color the horizon with a light shade



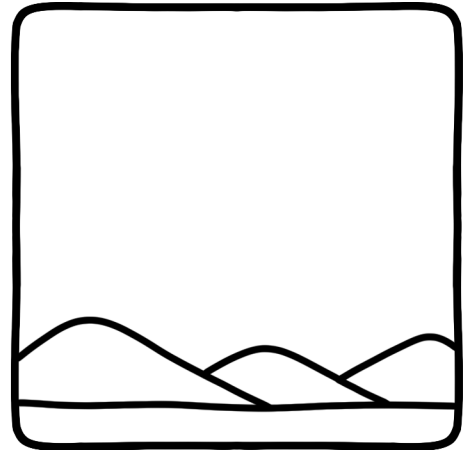
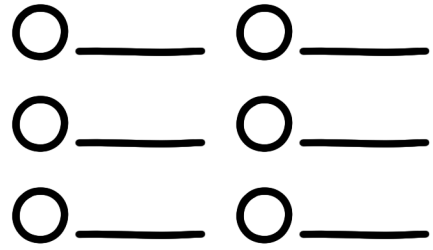
2 Add a medium shade above it



3 Color the top with a darker shade

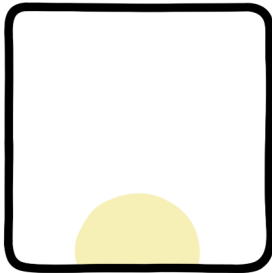


4 Draw and smudge to create clouds with a white acrylic pen



## • Sunrise

1 Draw the rising sun on the horizon



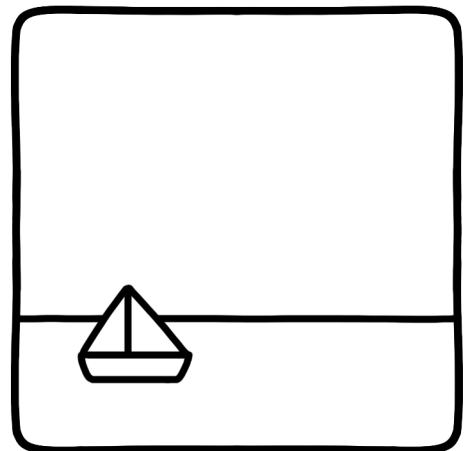
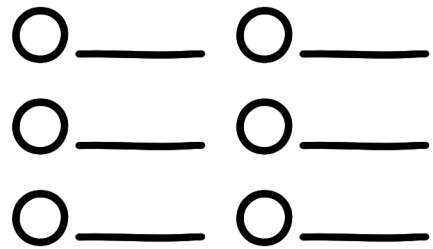
2 Color outward from light to deep to create a gradient sky



3 Blend the colors with a colorless blender



4 Draw sun rays with a white acrylic pen

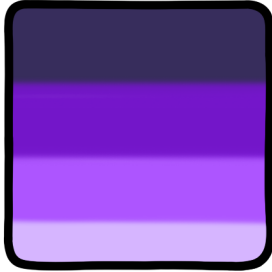


# SKY

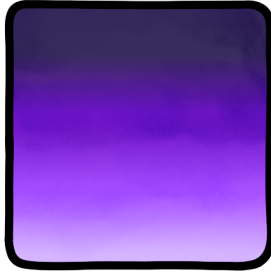
## • Bolide



1 Color the base from light to dark



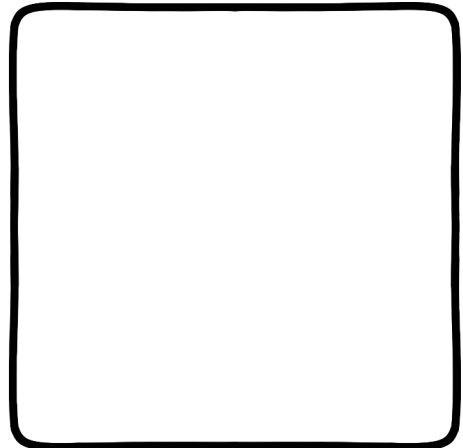
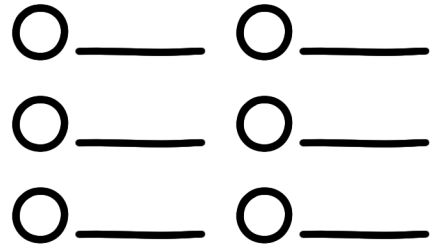
2 Blend smoothly using a colorless blender



3 Draw shooting stars with a white acrylic pen and smudge the trails



4 Add extra sparkles with a white acrylic pen



## • Galaxy



1 Color the base from light to dark



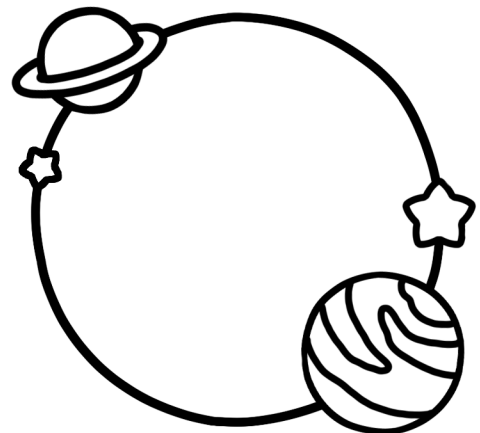
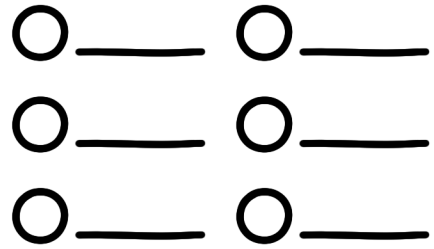
2 Blend smoothly using a colorless blender



3 Draw radiating trails with a white gel pen



4 Add dots and sparkles with a white acrylic pen



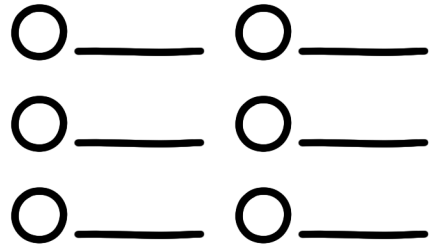
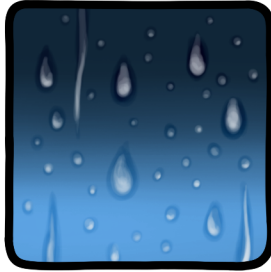
# WEATHER

## • Rain ○ ● ●

1 Color the base with medium and dark shades



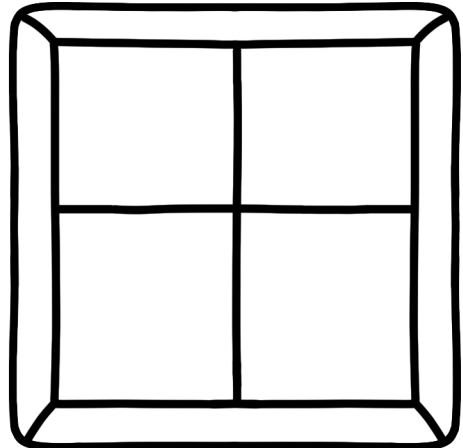
2 Draw raindrops using the lightest shade



3 Highlight with a white acrylic pen and shade the raindrops

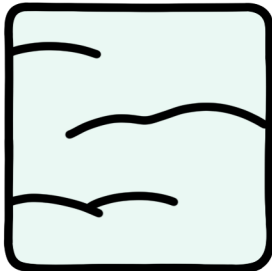


4 Use a white pencil to create a foggy effect

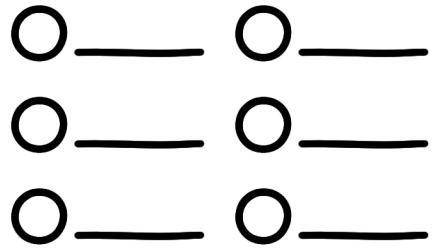
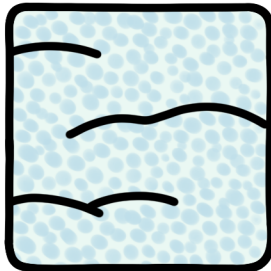


## • Snow ○ ○ ○ ● ●

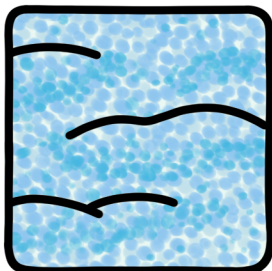
1 Color the base with a light shade



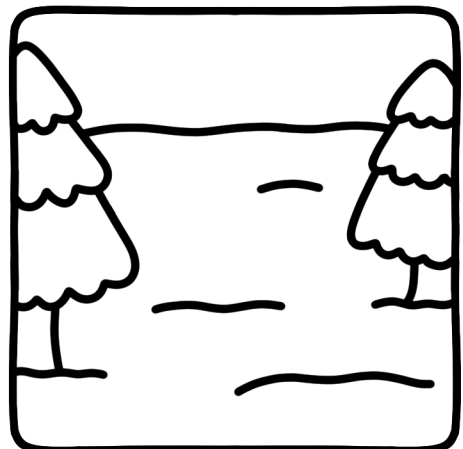
2 Add dots using a medium shade



3 Layer more dots with a dark shade



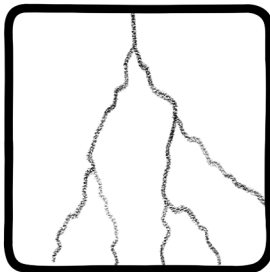
4 Highlight and dot the top with a white acrylic pen



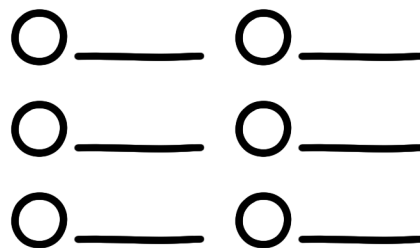
# WEATHER

## • Storm ○ ○ ○ ○ ●

1 Draw lightning lines with a pencil



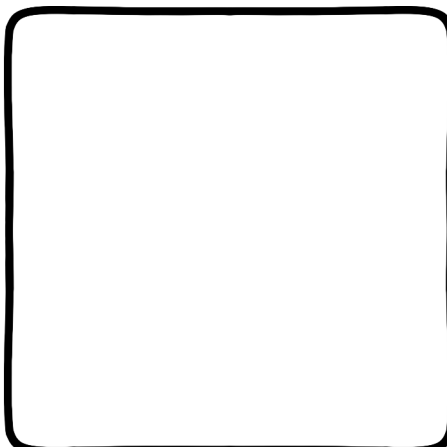
2 Color outward from light to dark shades



3 Use 10mm and 5mm white gel pens to draw the lightning lines

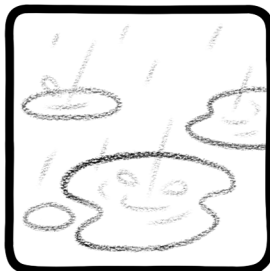


4 Draw clouds using a colorless blender

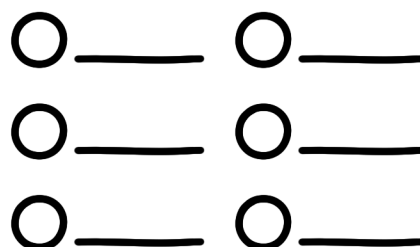
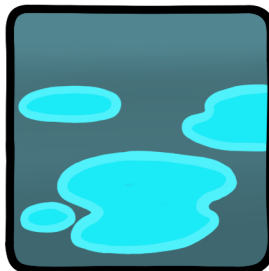


## • Puddle ○ ○ ● ●

1 Draw puddle shapes and raindrops with a pencil



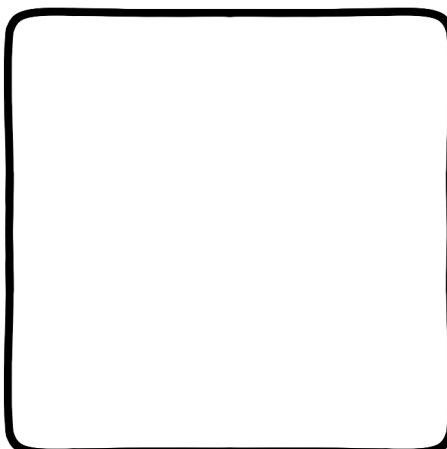
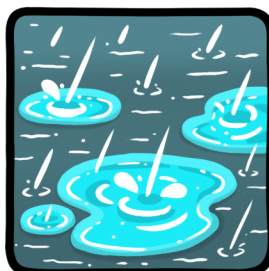
2 Color the puddles and the surrounding ground area



3 Draw raindrops using a white acrylic pen



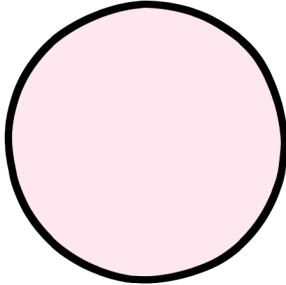
4 Add shadows to the puddles to create depth



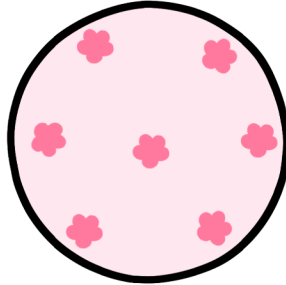
# PATTERN

## • Floral ○ ● ● ● ● ●

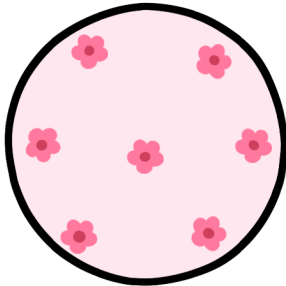
1 Color the base with a light shade



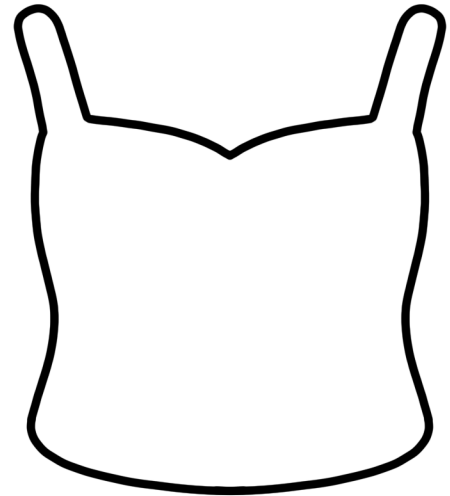
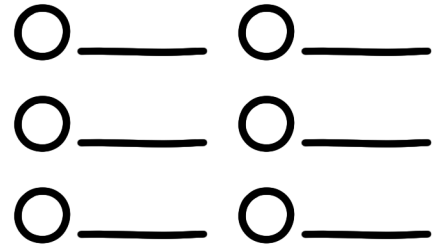
2 Draw random flowers using a darker color



3 Add flower centers with the darkest shade

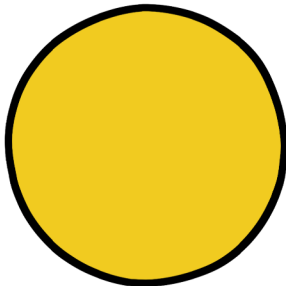


4 Fill empty spaces with leaves or extra patterns

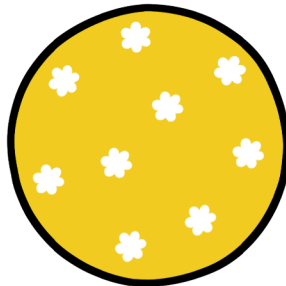


## • Daisy ○ ● ● ● ● ●

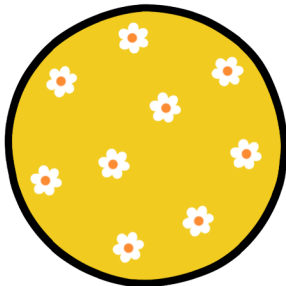
1 Color the base with a medium or dark shade



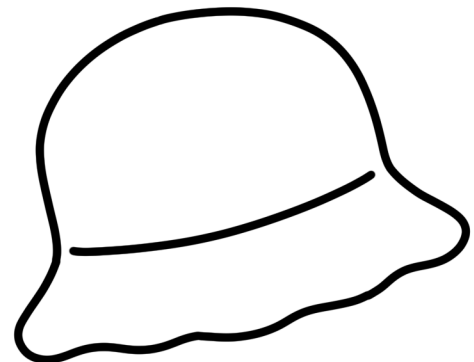
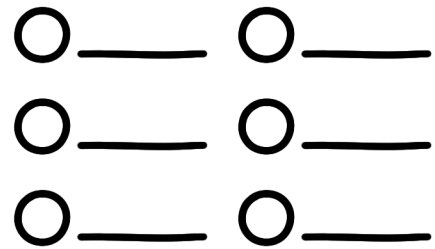
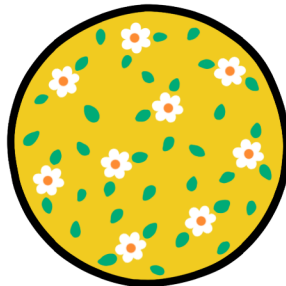
2 Draw random daisies using a white acrylic pen



3 Add flower centers with a colored acrylic pen



4 Fill empty spaces with leaves or extra patterns

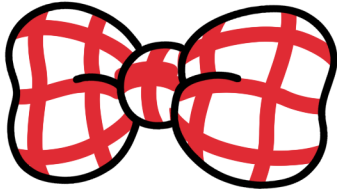


# PATTERN

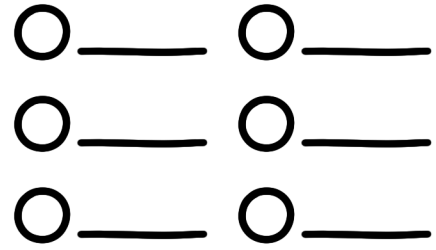
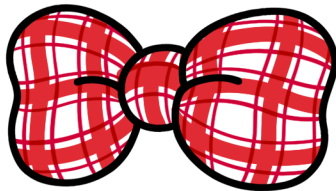
## • Plaid



1 Draw thick vertical and horizontal lines using a medium shade



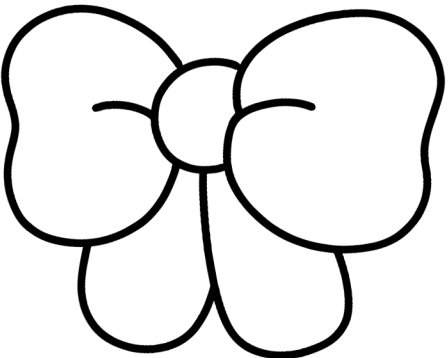
2 Add thinner lines along both directions with a darker shade



3 Repeat thinner lines with another color



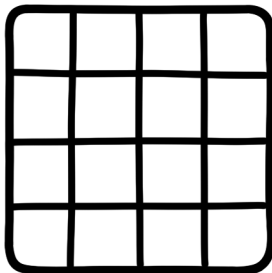
4 Add highlights with a white acrylic pen



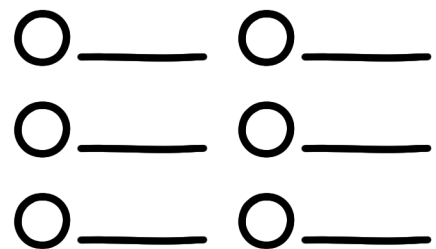
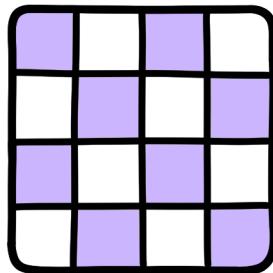
## • Checkered



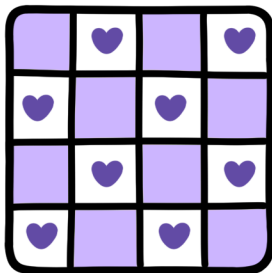
1 Draw a grid using a black pen



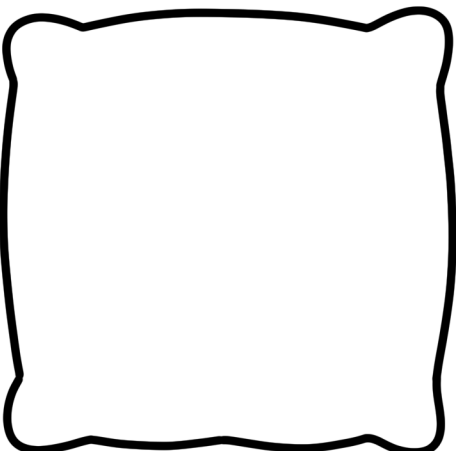
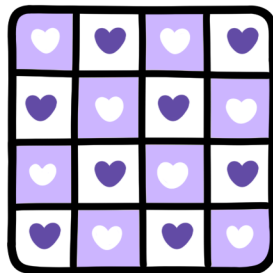
2 Fill alternating squares with different colors



3 Draw patterns on the light squares with a darker shade



4 Add patterns on the dark squares with a white acrylic pen

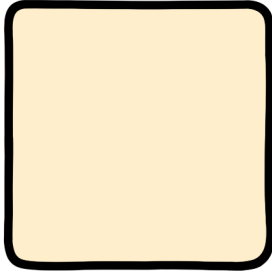


# PATTERN

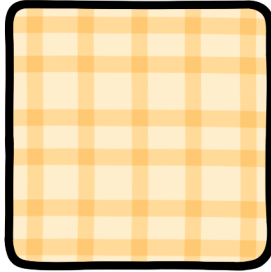
## • Strawberry



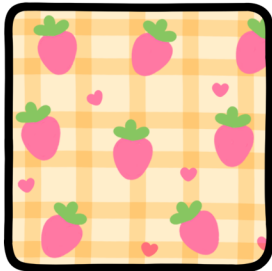
1 Color the base and let it completely dry



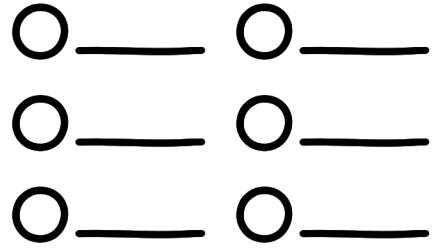
2 Draw horizontal and vertical lines with a darker shade



3 Draw strawberries and hearts with pink and green



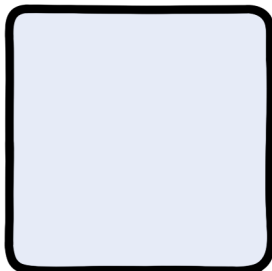
4 Add dots and flowers with acrylic pens



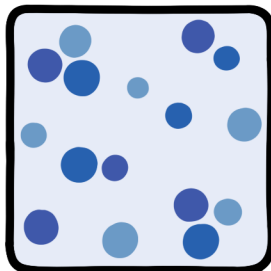
## • Blueberry



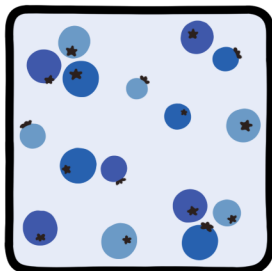
1 Color the base with a light color



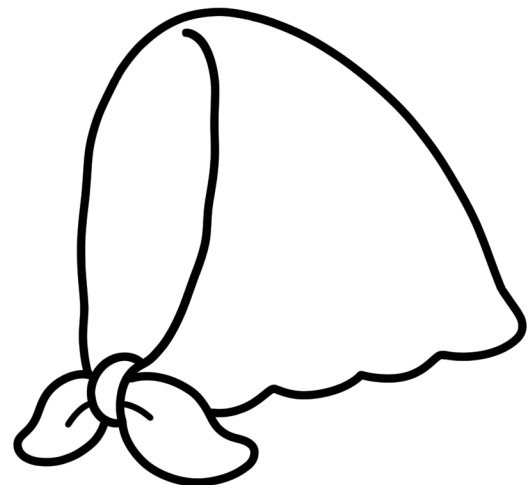
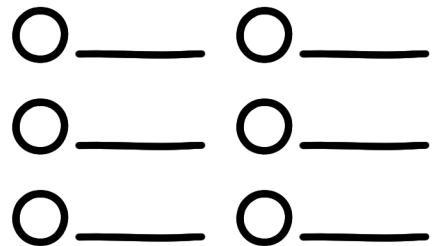
2 Draw random big and small blueberries with darker shades



3 Add stars on the berries using a dark acrylic pen



4 Add highlights and draw leaves around the berries

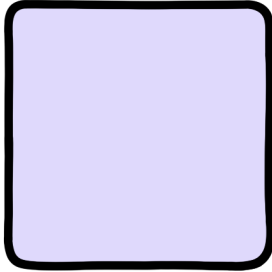


# PATTERN

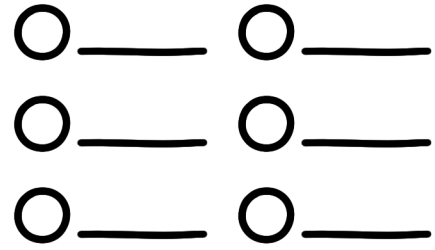
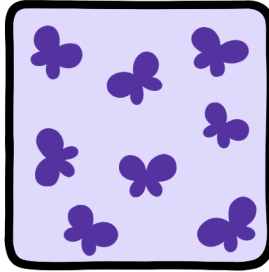
## • Butterfly



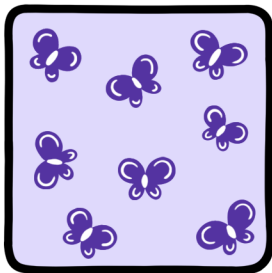
1 Color the base and let it completely dry



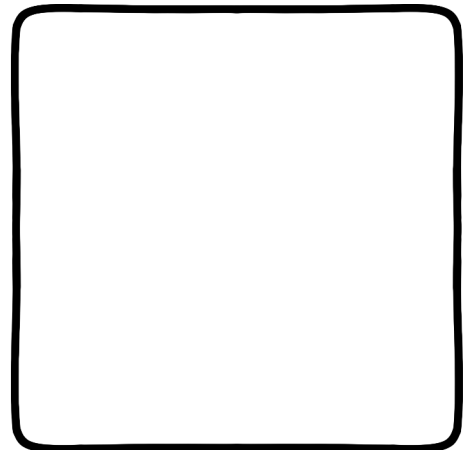
2 Draw butterfly shapes using a dark color



3 Use a white gel pen to outline and define the butterflies



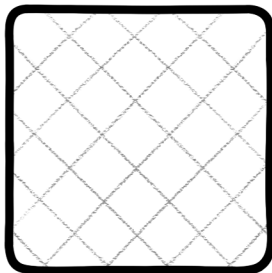
4 Add extra patterns using a dark color and a white acrylic pen



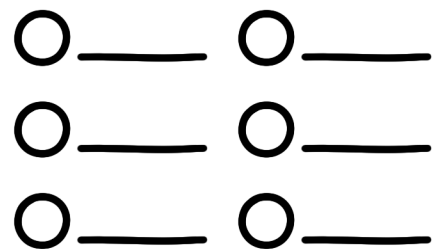
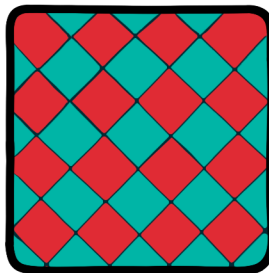
## • Xmas



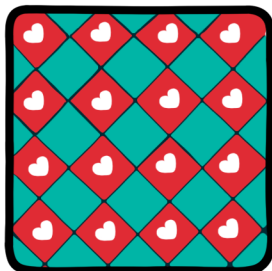
1 Draw a grid using a pencil



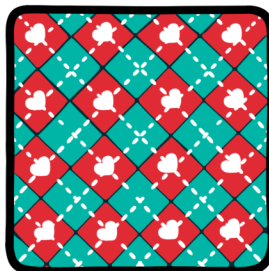
2 Color alternating squares with red and green



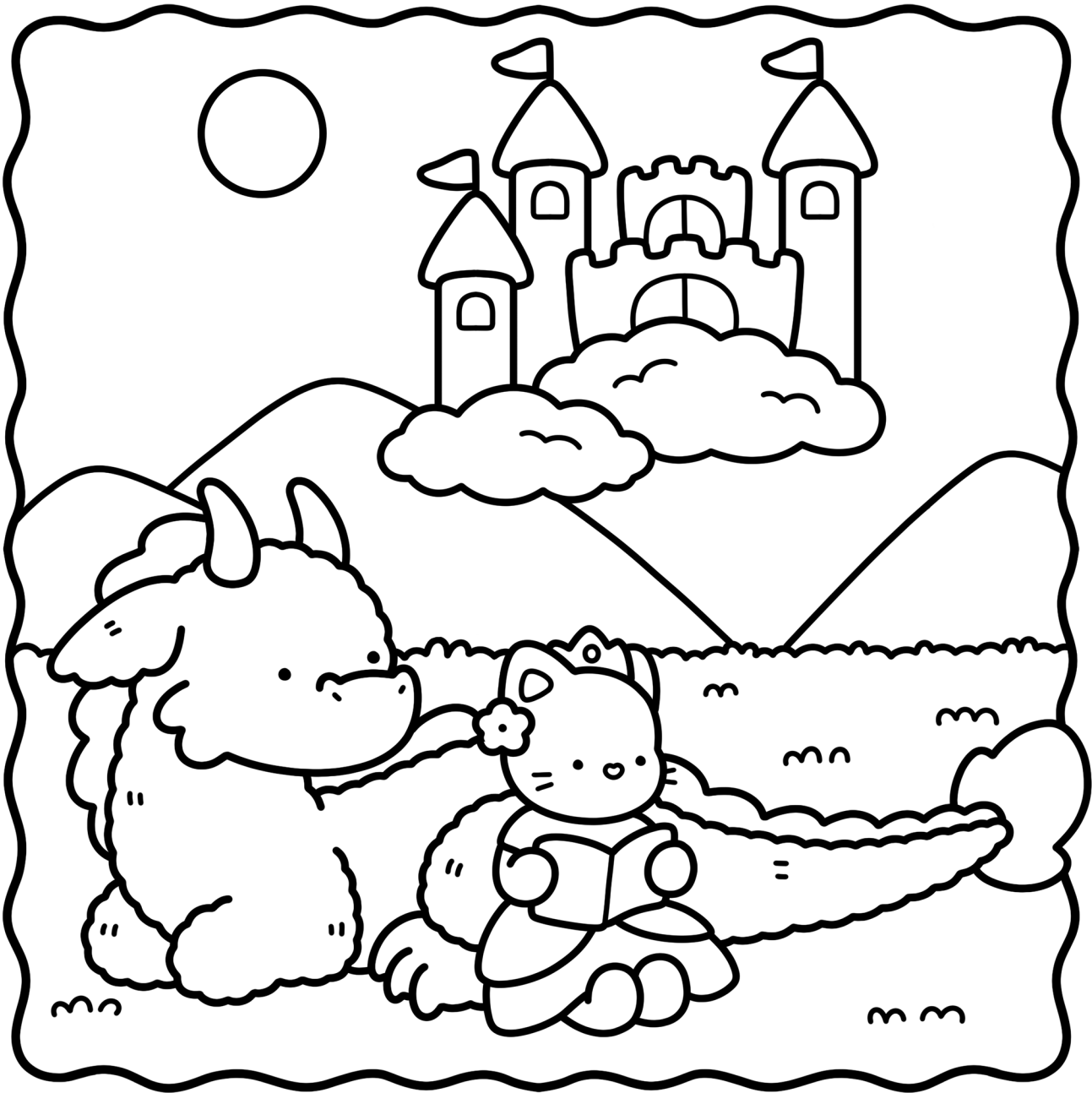
3 Draw small hearts using a white acrylic pen



4 Add dashed lines across horizontal and vertical directions



# PRACTICE PAGE



- \_\_\_\_\_
- \_\_\_\_\_
- \_\_\_\_\_

- \_\_\_\_\_
- \_\_\_\_\_
- \_\_\_\_\_

- \_\_\_\_\_
- \_\_\_\_\_
- \_\_\_\_\_

- \_\_\_\_\_
- \_\_\_\_\_
- \_\_\_\_\_

# PRACTICE PAGE



- \_\_\_\_\_
- \_\_\_\_\_
- \_\_\_\_\_

- \_\_\_\_\_
- \_\_\_\_\_
- \_\_\_\_\_

- \_\_\_\_\_
- \_\_\_\_\_
- \_\_\_\_\_

- \_\_\_\_\_
- \_\_\_\_\_
- \_\_\_\_\_

# PRACTICE PAGE



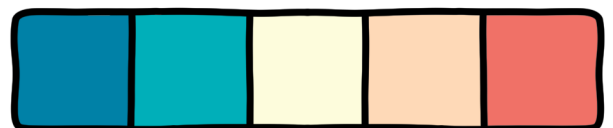
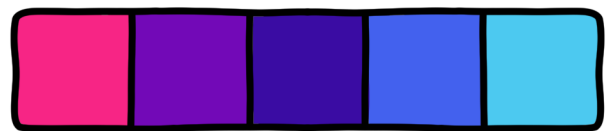
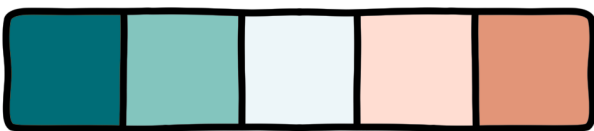
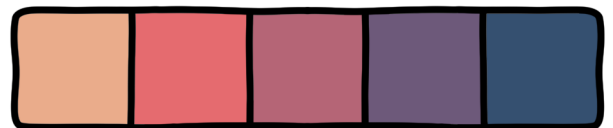
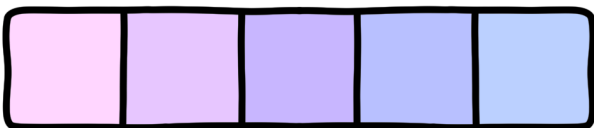
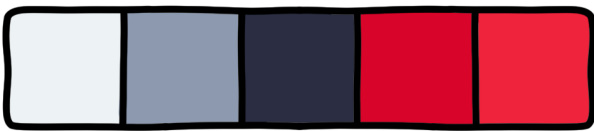
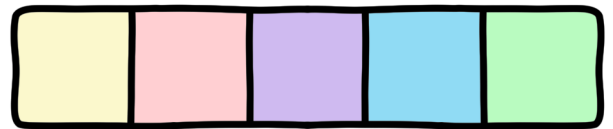
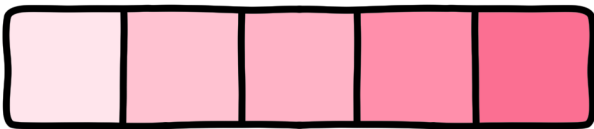
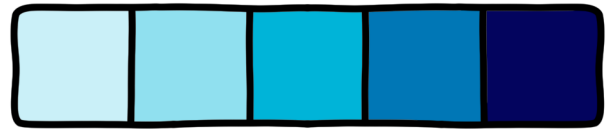
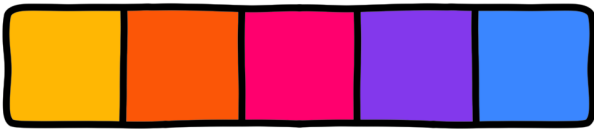
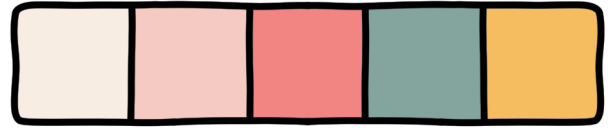
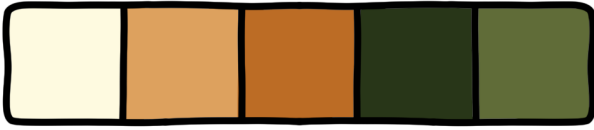
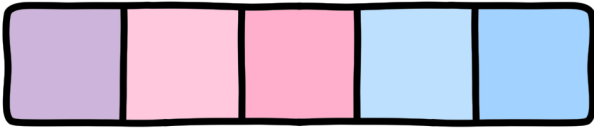
- \_\_\_\_\_
- \_\_\_\_\_
- \_\_\_\_\_

- \_\_\_\_\_
- \_\_\_\_\_
- \_\_\_\_\_

- \_\_\_\_\_
- \_\_\_\_\_
- \_\_\_\_\_

- \_\_\_\_\_
- \_\_\_\_\_
- \_\_\_\_\_

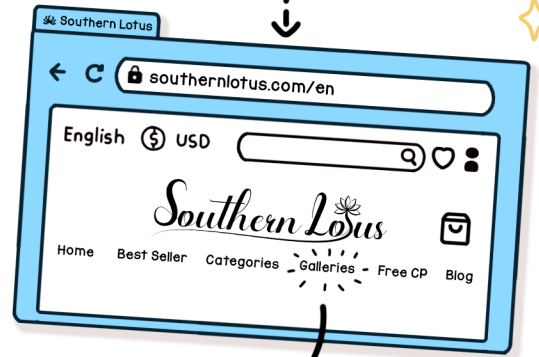
# COLOR PALETTE SUGGESTION



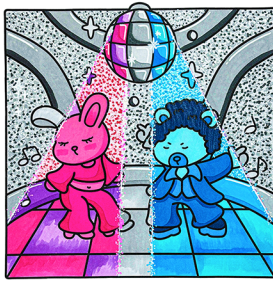
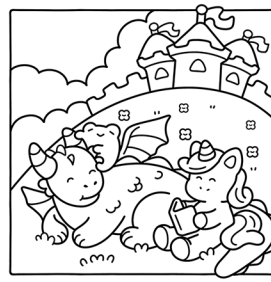
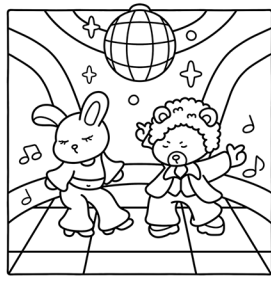


Catch all our step-by-step tutorials on social media!

scan us to see more!

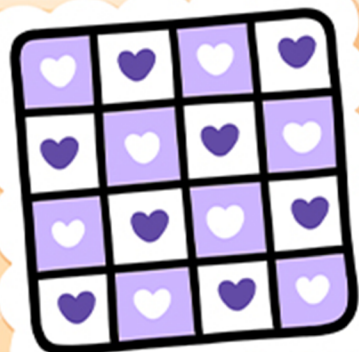


## UNIQUE FREEBIE GALLERIES



New, unique, completely free, and updated daily!

# Fun and Relaxing Coloring Practice.



Sprinkle joy to your pages!